



OKLAHOMA SCHOOL of
SCIENCE and MATHEMATICS
FOUNDATION



2022-23 ANNUAL REPORT

SCHOOL YEAR (8/1/2022-7/31/2023)

1141 N LINCOLN BLVD
OKLAHOMA CITY, OK, 73104

OSSM MISSION

The mission of the Oklahoma School of Science and Mathematics is to:

- **Educate students** who show promise of exceptional academic development through a program of instruction and discovery that challenges them far beyond the traditional high school model, imparting a superior foundation for careers in science, technology, engineering, and mathematics fields
- **Serve as a catalyst for advancing public school STEM education in Oklahoma** by providing residential, regional, summer, and virtual learning programs that extend advanced science and math education to a diverse student demographic
- **Inspire students to make a difference** in the State of Oklahoma and the world by leveraging their knowledge and curiosity for the betterment of mankind

The mission of the OSSM Foundation is to foster excellence in K-12 science and mathematics education throughout Oklahoma by supporting the Oklahoma School of Science and Mathematics' outreach projects, programs, development, students, faculty, and staff.

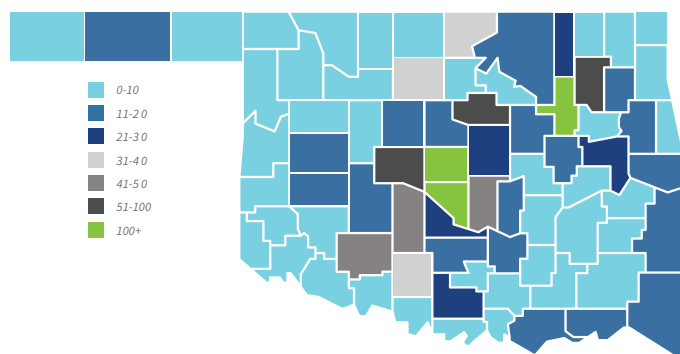
OSSM PRESIDENTIAL BATON PASSES

The OSSM Community would like to express deepest gratitude to **Dr. Edna McDuffie Manning**, the school's Founding President Emerita, and to **Dr. Kenneth Lease**, long-time Vice President of Academics, who both came out of retirement to lead OSSM during the 2022-2023 school year while a national search continued for the school's third president. The tremendous debt of gratitude we owe Drs. Manning and Lease continued to grow during this last "interim" year. No one could have stepped in who knew OSSM more deeply and could have led so well from day one. Many grateful thanks to both of these world class lifetime educators!

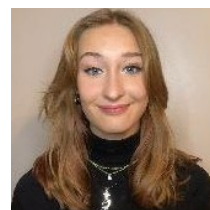


On June 1, 2023, we welcomed Mr. Tony Cornforth as OSSM's third president! A northwest Oklahoma native, Professor Cornforth began his career with OSSM in 2002 as the first math professor at OSSM's Ardmore Regional Center, and he taught math at the residential campus in OKC from 2004 to 2007. In 2007, Professor Cornforth helped launch the Wayne Regional Center as its inaugural physics instructor and later took over both math and science teaching duties. During his 14 years at the Ardmore center, 287 students completed the program, improving their ACT scores and earning top scores on AP exams, and 17 of his students earned Oklahoma Academic All-State recognition. In 2021, Professor Cornforth returned to the residential campus as part of the math department faculty, and in January 2023, he was unanimously appointed by the Board of Trustees to be the third president of OSSM. President Cornforth holds bachelor's degrees in Mathematics and Mathematics Education from Southwestern Oklahoma State University, a master's degree in Mathematics from the University of Oklahoma, is certified in Educational Leadership, and is completing his doctoral coursework in Education at Southern Nazarene University.

GRADUATES (1992-2023)



“I attended OSSM to strive in my education. It was the hardest decision ever, but I have been surprised by my capabilities to learn and discover my passions in medical biology. The biggest takeaway from OSSM is my effective study habits and how much I have learned about myself.”



Annabelle B., OSSM '24 (Mingo Valley Christian School)

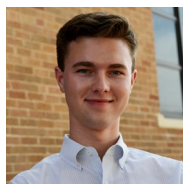
RESIDENTIAL

OSSM is a state funded, two-year **residential high school** for Oklahoma juniors and seniors with ability and interest in math and science. **Ranked No. 5 among more than 20,000 public high schools nationally** (Niche.com), OSSM challenges students far beyond the traditional high school model. Everything at OSSM supports students' academics—from the school's residential immersion model, college-level curriculum, and largely doctoral-level teaching faculty (75%) to required evening study halls staffed with faculty, peer support, and limited cell phones and personal internet. Students leap forward in their academic progress, with many OSSM graduates receiving numerous credits for their OSSM classes at their chosen institutions of higher learning.

STATEWIDE

OSSM operates **Regional Centers** in Enid, Okmulgee, Poteau, Tahlequah and Stilwell, providing students with calculus, calculus-based physics, and other advanced courses taught by OSSM instructors in partnering Career Techs near their homes.

OSSM's **Virtual Program** works with high schools across the state to allow students anywhere in Oklahoma to receive daily interactive instruction online in calculus, calculus-based physics, and other advanced STEM courses AND to receive full face-to-face labs brought to them regularly by our accomplished master-level OSSM instructor.



“For rural students like myself, the Virtual Program perfectly balances the rigor of OSSM with the ability to engage in your everyday extracurriculars. The opportunities opened up by this program and their ease of access remain unparalleled for students across the state.”

Wyatt J., OSSM '23, Altus H.S.

SUMMER PROGRAMS

One-day Middle School Math & Science Workshops

Sponsored by **Williams Companies** and the **Oklahoma Aeronautics Commission**

The OSSM Summer Academies

Two separate week-long STEM camps for high school students (fee-based). Many thanks to **Marathon Oil** and **American Fidelity Foundation** for providing scholarships for students with financial need to attend the 2023 OSSM Summer Academies!

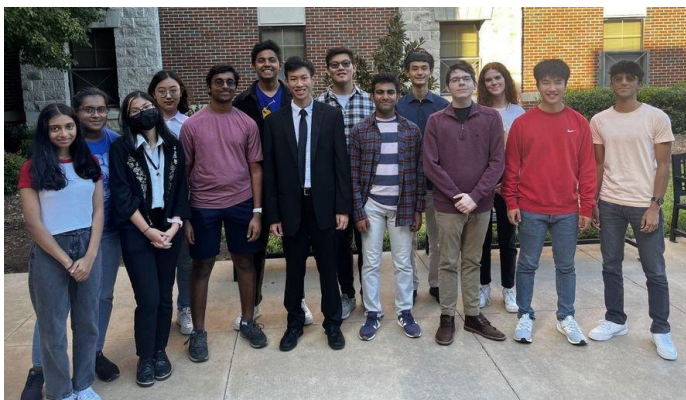
Week-long Middle School Math & Science Teachers' Institutes

Free week-long residential institutes providing high quality professional development—includes national & local experts on content knowledge, best teaching practices, field trips, peer networking, and more. Many thanks to our sponsors **The Sarkeys Foundation**, **Oklahoma Medical Research Foundation**, **Phillips 66**, and **Rob Miner**.

OSSM BY THE NUMBERS

After winning the state championship in February, the OSSM team of Andrew Z. (Edmond North H.S.), Aaron P. (Edmond Santa Fe H.S.), Krish M. (Casady, OKC), and Billy Z. (MacArthur H.S., Lawton) won **3rd place in the National TEAM+S competition**—Testing for Engineering Aptitude in Mathematics + Science—held in Louisville, KY, in July 2023!

Charles L., OSSM '23 (Stillwater H.S.), made a perfect score (36/36) on the 2022-23 Oklahoma Math League (OKML) series of contests, which means he was a **1st place finisher** in the state of Oklahoma (there are six rounds throughout the year). *Congratulations, Charles!*



Congratulations to 15 OSSM '23 National Merit semifinalists!

They are Jackson C. (Westmoore H.S.), Amanda D. (Plainview H.S.), Emmy H. (Norman North H.S.), AJ J. (Deer Creek H.S.), Janice K. (Stillwater H.S.), Charles L. (Stillwater H.S.), Damodar P. (Edmond Memorial H.S.), Sourish P. (Deer Creek H.S.), Sarvesh R. (Edmond North H.S.), Anoushka S. (Southmoore H.S.), Meena S. (Norman North H.S.), Jason W. (Walnut H.S., CA), Natalie W. (Duncan H.S.), Brian Y. (Stillwater H.S.), and Alexander Z. (Plainview H.S.). Selection is based on PSAT.



Krish M., OSSM '24 (Casady, OKC), and former classmate Krish P. went to D.C. to present their app, Smart Carpool. They met with House members and tech companies. Earlier, they were **1st in the Congressional App Challenge for 5th Dist. of OK, the most prestigious prize in student computer science.**

From 8/1/2022 through 7/31/2023, OSSM served **938** students and teachers from **47 of 77** Oklahoma counties!

MENTORSHIP

During the 2022-2023 school year, many OSSM seniors worked with professional mentors in areas of their interest—from immunology, computer science, aerospace engineering, and nanoparticles to molecular biology, cancer research, neuroscience, data science, and everything in between. Research projects students were fortunate to work on, just to name a few, included:

- Galaxy Clusters: X-Ray Detection and Visual Confirmation
- Exoskeletons and the Socketless Socket at Martin Bionics
- RD3 and MYCN Gene Correlation in Neuroblastoma Samples
- Creating Unmanned Aircraft for Atmospheric and Radio Frequency Analysis
- CD38 and its Pathways: Implications for Cellular Signaling and Cancer Immunotherapy
- What Translating Motion Capture into Computer Models May Show
- Smooth Numbers Algorithm in Number Theory

Many thanks to our mentors!

Harold L., OSSM '23 (Moore H.S.), completed a mentorship with Michele Galizia, Ph.D. in the Department of Chemical, Biological, & Materials Engineering at OU. Below is a note from Dr. Galizia—Harold is now a freshman at OU majoring in chemical engineering and has continued his research in Dr. Galizia's lab.

"I'm so proud [of Harold] and the progress he made... Harold has already published two papers in high impact factor journals, and now he is a freshman student in our program. I firmly believe this is also a great accomplishment for OSSM. I hope we can work together in the years to come to give our young Oklahomans wonderful opportunities to grow and, foremost, flourish."

Michele Galizia, Associate Professor

*President's Associates Presidential Professorship in Chemical Engineering
School of Sustainable Chemical, Biological and Materials Engineering (SCBME)
The University of Oklahoma Gallogly College of Engineering*

COURSE OFFERINGS (OSSM RESIDENTIAL PROGRAM)

College Level courses taught by largely Ph.D. (75%) faculty. See more at <https://www.ossm.edu/academic-departments/>

MATHEMATICS

Pre-Calculus I, II, III	Real Analysis
Calculus I, II	Special Advanced Problems
Multivariate Calculus	Topology
Differential Equations	Foundations of Mathematics
Number Theory	
Probability and Statistics	
Linear Algebra	

BIOLOGY

Anatomy & Physiology	Endocrinology
Biochemistry	Microbiology
Molecular & Cellular Biology	Plant and Soil Science
Embryology	Intro to Neuroscience
Genetics	General Zoology

COMPUTER SCIENCE

Intro to Computer Science	Computer Architecture & Assembly Programming
Object-Oriented Programming with Java	Special Topics in Computer Science
Data Structures I & II	Intro to Data Science & Data Science Seminar
Computer Networking	

HUMANITIES

American Literature	Western Civilization	Special Topics in Humanities	Fine Arts
World Literature	East Asian History	Foreign Languages	
American History	Arab Civilization	Principles of English Composition	

PHYSICS

General Physics	Special Topics in Theoretical Physics
Mechanics	Exploration Geosciences
Electricity and Magnetism	Oceanography
Astronomy	
Intro to Modern Physics	
Modern Physics II	
Thermal Physics Waves & Optics	

ENGINEERING

Robotics Engineering	Complex Analysis (Math)
Electronic Circuits	Geoscience Seminar (Intro. to Petroleum Engr.)
Assembly Language	

CHEMISTRY

General Chemistry I & II	Chemical Equilibrium
Organic Chemistry I & II	Chemistry Olympiad Prep/Directed Study
Biochemistry	



“I chose OSSM because the education is so much more challenging than the one I could have received elsewhere.”

Natalie W., OSSM '23, Duncan H.S.

OSSM CLASS OF 2023 COLLEGE MATRICULATIONS

Carnegie Mellon University (1)	Georgetown University (1)	Texas A & M University-College Station (1)	University of Texas-Dallas (2)
Colby College (1)	Johns Hopkins University (1)	Trinity University (1)	University of Tulsa (2)
Columbia University (2)	Oklahoma State University (5)	University of California-Irvine (1)	Vanderbilt University (1)
Cornell University (1)	Rice University (1)	University of Central Oklahoma (1)	
Emory University (2)	Rose State College (1)	University of Missouri-Kansas City (1)	
Evangel University (1)	Rose-Hulman Institute of Technology (1)	University of Oklahoma (16)	

See more about OSSM academics, faculty, and programs at

WWW.OSSM.EDU

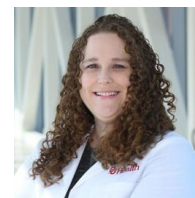


Follow us on Facebook at [oklahomaschoolofscienceandmath](https://www.facebook.com/oklahomaschoolofscienceandmath)

Cherie Herren, M.D.

OSSM CLASS OF 1997 (Cordell H.S.)

Child Neurologist, Oklahoma Children's Hospital, OU Health



Dr. Herren earned her medical degree from the University of Oklahoma College of Medicine in Oklahoma City; she completed a residency in pediatrics at the OU College of Medicine and a residency in pediatric neurology from the University of Texas Southwestern in Dallas, Texas. She completed fellowships in pediatric epilepsy and pediatric neurophysiology from UT Southwestern as well. She is Board Certified in Psychiatry & Neurology and Pediatric Neurology.

Cherie knew from a young age she wanted to be a physician. She also knew her small school in rural Oklahoma didn't offer physics, calculus, or advanced biology—all of which would be required for her to achieve her goal.

Today, Dr. Herren is a pediatric neurologist and epileptologist (seizure specialist). She credits OSSM with helping her prepare for her career by teaching valuable study habits and work ethic, which helped her succeed in undergraduate and medical school.

"As an epileptologist, I specialize in reading electroencephalograms (EEGs) and teaching how these studies are generated and how to read them. Thanks to Dr. Arne Troelstra [OSSM Physics Faculty 1990-98], I can do this with confidence."

Caleb Lareau, Ph.D.

OSSM CLASS OF 2011 (Oklahoma Bible Academy, Enid)

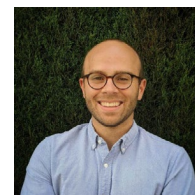
Assistant Member, Program in Computational and Systems Biology, Memorial Sloan Kettering Cancer Center, New York, NY

Bachelor of Science, summa cum laude, Biochemistry and Mathematics 2015, University of Tulsa (Tulsa, OK)

Master of Arts, Biostatistics 2017, Harvard University (Cambridge, MA)

Doctor of Philosophy, Biological and Biomedical Sciences 2020, Harvard University (Cambridge, MA)

Postdoctoral Fellowship, Departments of Pathology and Genetics 2023, Stanford University (Palo Alto, CA)



Dr. Lareau researches the molecular basis of cancer: how cells are replaced in the body, how this changes with disease, and how the body can fight back. He's also a scientific cofounder of Cartography Biosciences, a stealth startup developing precision immunotherapies for cancer. His laboratory focuses on how cells evolve within an individual's lifetime from molecular triggers, including somatic mutations and exposures to viruses, and how these changes impact the ability of the immune system to respond to cancers and infections. He has authored and co-authored many dozens of papers, invited commentaries, and book chapters and has several patents and more pending based on his research. In 2022, he was recognized in **Forbes 30 Under 30** in the Science Category.

The OSSM experience is not something that dries up once you leave, Lareau notes. On the cusp of what he considers his biggest scientific breakthrough to date, he had a really exciting result and approached a senior professor at Dana Farber Cancer Institute in Boston. He asked to consult with someone there on their complimentary data, and he was referred to Katie Maurer, M.D., Ph.D. who he realized as they talked was also an OSSM alum (2007) and also from Enid!

"[Katie] had actually been involved in seeing some of the patients that were critical for some of the results I was seeing in my data... How serendipitous that you would have a fellow OSSM alum on the other coast be this other critical point of contact to help make a discovery happen."

Chris Nusbaum, MBA

OSSM CLASS OF 1996 (John Marshall H.S., OKC)

Director of Software Development, Paycom

Bachelor of Computer Science, Oklahoma Christian University | MBA, University of Central Oklahoma



Chris started developing software over 20 years ago for a metal building company, taught English in Japan for 2 ½ years, and started working as a software developer for Paycom in the summer of 2009. In 2013, he was promoted to Manager of Software Development and in September of 2022 promoted to Director of Software Development. Chris has been instrumental in the development of key payroll and time-keeping developments that have expanded Paycom's market from regional to national, and recently from national to multi-national.

"OSSM taught me the meaning of hard work, grit, and perseverance to achieve my goals. A big part of that learning was due to the outstanding faculty from which I had the opportunity to learn."

Mubeen Shakir, MD, MPP, MSc

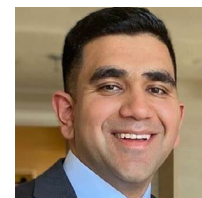
OSSM CLASS OF 2010 (*Casady School, OKC*)

Internal Medicine Physician, OU Health

Associate Vice President of Clinical Innovation, OU Health

B.S. Biochemistry, University of Oklahoma, 2013 | M.Sc. Medical Anthropology, University of Oxford, 2014

M.P.P. Public Policy, University of Oxford, 2015 | M.D. Medicine, Harvard Medical School, 2019



Dr. Shakir earned his medical degree from Harvard Medical School in Boston, MA where he graduated cum laude with special honors in Health Policy. He served as a commencement speaker at his 2019 Harvard Medical School graduation, and he completed an internal medicine residency at Massachusetts General Hospital in Boston, MA.

Prior to medical school, Dr. Shakir was awarded the prestigious **Rhodes Scholarship** through which he completed a Master of Public Policy and a Master of Science in Medical Anthropology at the University of Oxford in Oxford, England. Dr. Shakir is passionate about health policy and has advised on political campaigns as well as policy for the Massachusetts Department of Public Health.

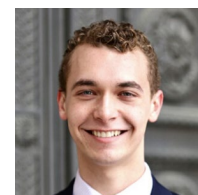
“OSSM has been the best academic decision I have made. I would not be here without it and the faculty who make it great.”

Storm Mata wins DoE Fellowship

OSSM CLASS OF 2015 (*Sapulpa H.S.*)

Civil and Environmental Engineering (CEE) Graduate Student, MIT

Alumnus Storm Mata (2015) is a Civil and Environmental Engineering (CEE) graduate student at MIT (Ph.D. 2026). In June 2022, he was one of 33 students across the US to be awarded highly competitive and prestigious DoE Fellowships. Storm is pursuing his doctorate degree in environmental fluid mechanics with an emphasis in wind energy and atmospheric boundary layer physics. *Congratulations Storm!*



E. L. and Thelma Gaylord Foundation makes highly impactful investment in OSSM Computer Science curriculum

E.L. and Thelma Gaylord
FOUNDATION

The OSSM community wishes to express immense gratitude to the E.L. and Thelma Gaylord Foundation for its \$200,000 grant given at the end of 2022 to ensure OSSM can always attract and retain the very best computer science faculty in a highly competitive market environment. This wonderful gift, together with other generous gifts given over the past several years, brought the Computer Science Endowment at OSSM, now the **E.L. and Thelma Gaylord Computer Science Endowment**, to over \$400,000. The investment proceeds of this critical still-growing endowment helped OSSM hire OSSM Computer Science Professor Sean Jones, M.S. (OSSM '01) on a full-time basis, filling a position vacant since 2018.

Many thanks to the E.L. and Thelma Gaylord Foundation for ensuring OSSM students will always have the very best instruction in the critical field of Computer Science!

Alumnus expanding OSSM Computer Science offerings as full-time professor

In January of this year, Sean Jones became a full-time professor of Computer Science. Professor Jones grew up in Osage County and graduated from OSSM in 2001. Upon graduation the U.S. Naval Academy, he was commissioned as an Ensign in the United States Navy. He graduated in 2005 with a bachelor's degree in computer science before attending the University of Oklahoma, graduating in 2007 with a master's degree in computer science with special areas of interest including Artificial Intelligence (AI) and Networking. After obtaining his master's, he attended Naval Nuclear Power Training School in Charleston, South Carolina.

In 2012, Professor Jones began work at NextThought, a technology company in Norman. In August 2015, following the retirement of Professor Charles Dillard, long-time computer science professor, Jones was asked to teach the Introduction to Computer Science course as OSSM conducted a search for a full-time computer science professor. Professor Jones continued teaching Intro to Computer Science, adding courses such as Data Structures I and II and Intro to Object Oriented Programming with Java until he joined the faculty full-time. He now plans to expand the computer science offerings further to include a course in Computer Networking being taught this fall, followed by courses in A.I. and a software engineering seminar in the spring.

Another goal currently in development is assembling a hardware lab providing facilities for students to have hands-on experiences with computer networking, A.I., and software development practices such as continuous integration.



OSSM FOUNDATION FINANCIALS

January 1 to December 31, 2022

REVENUE, GAINS AND OTHER SUPPORT

CONTRIBUTIONS

(net of discounts and allowances)

	WITHOUT DONOR RESTRICTIONS	WITH DONOR RESTRICTIONS	TOTAL
Undesignated	\$ 125,638	\$	\$ 125,638
Restricted for specific purpose or time		440,703	440,703
Restricted in perpetual nature		289,502	289,502
Interest income (net of fees of \$56,249)	49,583	229,613	279,196
Net unrealized and realized gains (losses) on investments	(257,468)	(2,509,736)	(2,767,204)
Total revenue, gains, and other support	(82,247)	(1,549,918)	(1,632,165)
Net assets released from restrictions	496,063	(496,063)	
Total revenue, gains, and other support	413,816	(2,045,981)	(1,632,165)

EXPENSES

PROGRAM EXPENSES

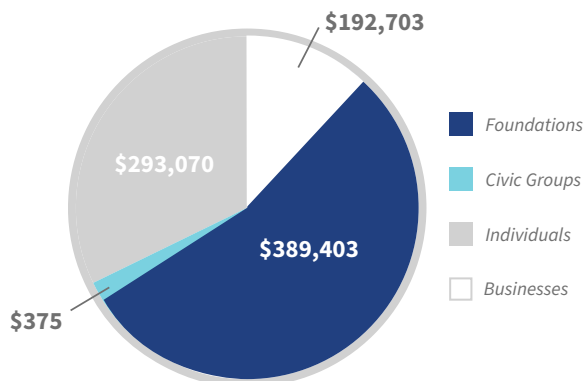
(contributions to OSSM)

Support of school programs	723,801		723,801
Total contribution to OSSM	723,801		723,801

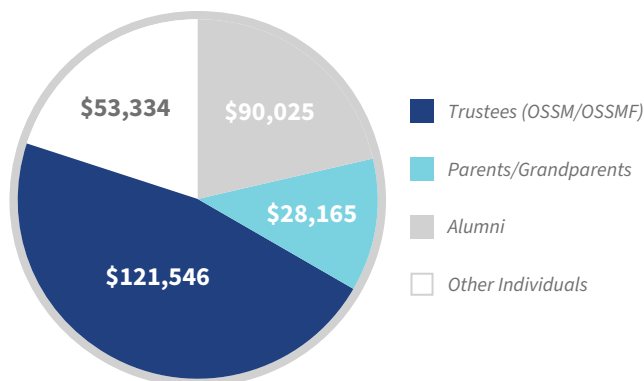
SUPPORTING SERVICES

Administration	119,383		119,383
Fundraising	41,831		41,831
Total supporting services	161,214		161,214
Total expenses	885,015		885,015
Increase (decrease) in net assets	(471,199)	(2,045,981)	(2,517,180)
Net assets at beginning of year	1,398,463	16,051,853	17,450,316
Net assets at end of year	927,264	14,005,872	14,933,136

DONATIONS BY CONSTITUENCY



INDIVIDUAL DONATIONS



Many thanks for all our partners making gifts from August 1, 2022 through July 31, 2023!

ARISTOTLE (\$100,000-\$499,999)

E.L. and Thelma Gaylord Foundation
Google (via Tides Foundation)
EUCLID (\$50,000-\$99,999)
Anonymous
H.A. and Mary K. Chapman Charitable Trust
Dr. Bryan Eastin ■
Sarkeys Foundation
LEONARDO DA VINCI (\$25,000-\$49,999)
Carleen and Jerry Burger
Samuel Roberts Noble Foundation
OGE Energy Corporation
Oklahoma City Community Foundation
COPERNICUS (\$15,000-\$24,999)
Molly and Paul Wehrenberg
Kirkpatrick Foundation
Dan Little
Marathon Oil
Oklahoma Medical Research Foundation
Mr. and Mrs. Eric Tong ■
GALILEO (\$10,000-\$14,999)
Anonymous
James Hatcher
Claudia Holliman
Stone Family Foundation
ISAAC NEWTON (\$5,000-\$9,999)
American Fidelity Foundation
Arnall Family Foundation
Boeing Company
Jan Barrick and Jerry Plant
Lawrence J. Brunsman ■
Chickasaw Nation
Catherine and Jack Coffman
Teresa Dietrich and Jacob Rosenberg ■
Mr. and Mrs. Todd Edmonds ■
Express Employment Professionals
Ken Ferguson
Google Matching Gifts Program
Heritage Trust Company
Mr. and Mrs. David McLaughlin
Phillips 66 Company
Steve Rhines
Linda and Bill Rodgers
Drs. Rosemarie and John Thomas
Bruzzy Westheimer
Williams Companies
LOUIS PASTEUR (\$2,500-\$4,999)
Katie Altschuler
Anonymous
Mr. and Mrs. Joel Champlin
Young and Keith Chappell
Delaware Resource Group
Regina Y. Hwang
Drs. Sharon and Kenneth Lease
Dr. Edna McDuffie Manning
Meinders Foundation
Robyn Grinstein Miller ■
Rob Miner
Northrop Grumman Foundation
Oklahoma Arts Council
Oklahoma Natural Gas Company
Brenton Phillips ■
Presbyterian Health Foundation
Dr. Robert Reynolds
Dr. and Mrs. Russell Rother
Liz Schwerdtfeger
Allen Wise
Yukon Door & Plywood, Inc.
MARIE & PIERRE CURIE (\$1,000-\$2,499)
AmerisourceBergen Global Services
Anonymous
Linda and Lance Benham
Bette Berline
Dr. Bart Binning
Lissa and Dr. Jon Blaschke
Drs. Danny and Susan Dusenbery Bohl ■
Mr. and Mrs. Robert F. Browne
Dr. Cari Combs ■
Capt. Sean Curtin ■
Pam Felactu
First United Bank
Connie and Gary Fuller
Ingrid Yingjie Gao ■
Drs. Latisha and Jonathan Heinlen ■
Hitachi Computer Products (America), Inc.

Holcim US (formerly Lafarge)
Anne and V. Lynn Holzberlein
Rex Ishikawa
Nicholas Johnson ■
Fred Jones Family Foundation
Carol and Don Kaspereit
Kerr Foundation
Lt. Col. Charles Laubach, MD ■
Patty and Jean Leger, Jr.
Carol and Mark Lester
Dr. William Lovallo
John McGrew and Barbara Ivy
Matthew McLaren
Dr. and Mrs. Steven Meier ■
Dr. Graham Mueller ■
Oklahoma Aeronautics Commission
Oracle Corporation-Matching Gifts Program
Mr. and Mrs. Jerry Pickering
Dr. Brad and Mrs. Laurie Parker Pillow ■
Dr. Kyle Pollard Pudenz ■
Rainbolt Family Foundation
Harry Rouse
Onkur Sen ■
Cory Schneberger ■
Dr. Eric Sherburn
Bridget Smith
Dr. Frank Lambert Smith ■
Mary Spencer
Dr. Matthew Thrasher ■
Shell Oil Co. Foundation Matching
Kyle Wichert ■
Donna and Lynn Windel
Winfield Investments
Mr. and Mrs. Steve Wood
JONAS SALK (\$500-\$999)
Hon. Tom Adelson
AmazonSmile.org
Anonymous
Arvest Bank
Nicholas Bailey
Kristine Turvey Baranski ■
Ann Bohanon
Chris Chavis ■
Dr. and Mrs. Qi Cheng
Dr. Otis Chodosh and Alison Law ■
ConocoPhillips
Mr. and Mrs. William H. Crawford
Dr. Sangeetha Dayalan ■
Robert Doenges
Sandra and Dr. David Drennan
Dr. and Mrs. Paul Ellgen
Jane and Dale Embry
Dr. Pamela and Mark Fly
Laurie Fournie
Dr. Ashley Friggel-Walker ■
Mr. and Mrs. David Graham
Dale and Dr. Cynthia Hanchey
Mr. and Mrs. Lloyd Hardin Jr.
Sue Ann and Dudley Hyde
Craig Jimenez and Dr. Susan Spencer
Amanda C. Jones ■
Michael P. Kopelman
Robin and Bradley Krieger
Dr. Frank Lawler
Dr. and Mrs. Xifan Liu
Alyssa Manning ■
Penni and Ron Mashore, P.D.
Dr. Michelle McCargish
Mike McDonald
Mr. and Mrs. Rocky Moore
Dr. Raha Nael and Gregory Carr ■
Mr. and Mrs. Chris Nusbaum ■
Mr. and Mrs. Chris Oehrlein
Pamela T. Olson ■
Dr. and Mrs. John A. Robinson
Heidi and Todd Russell
Mr. and Mrs. Thomas J. Ryan
Mr. and Mrs. Thomas Sell
Dr. Mubeen Shakir ■
Dr. Matthew Stewart ■
Marilyn Sullivan
Mr. and Mrs. Iwan Tjauw
Jodie Treeman ■
Dr. Nathan Valentine ■
Sharon and Robert Varnum
Cindy and Bryan Walker
Richard and Maurine Wells

Xhaoyang Xu ■
CHARLES DARWIN (\$250-\$499)
Christine and Mike Allred
Dr. Nancy Anthony
Tyler Carter ■
Dr. Lixia Chen and Junjie Wu
Wendy Chopin
Dakota and Jami Cole
Betty Crow
Mr. and Mrs. Denis Curtin
Mr. and Mrs. Quentin Danser
Mark Doiron
Major and Mrs. James Dunlap, MD ■
Captain and Mrs. Gerry Geletzke
Dr. Clint A. Givens
Dr. Andrew and Diana Frost
Mr. and Mrs. Jimmy Givens
Moriah N. Greggs ■
Mr. and Mrs. D. Aaron Harmon
Shannon and David Hill
David Hoel ■
Harris and Eliza Kempner Fund
Hon. Tim and Nancy Leonard
Carol Lin, J.D. ■
LTC and Mrs. Richard D. Lyons
Microsoft Matching Gifts Program
Chris Moore
Dr. Heath Mueller ■
Mr. and Mrs. Frank J. Parker
Mr. and Mrs. Richard Simms
Dr. and Mrs. Gregory L. Skuta
Janice Teel
Dr. Frank and Judy Wang
Polly and Alex Weisberg
Johnny Whitfield
Connie Zhai ■
Mr. and Mrs. Meijun Zhu
ALBERT EINSTEIN (--\$250)
Mr. and Mrs. Harry C. Abrams
Eli Adair ■
Anonymous
AT&T Oklahoma
Mr. and Mrs. Dennis Atkins
Philip Azar
Dr. Kurt T. Bachmann
Dr. Allison Cartwright Barnes ■
Monique Baxter
Dr. Rita L. Benischek
Frank Berlin
Mr. and Mrs. Scott Blomquist ■
Tim and Rev Sara Dillard Bodenstein ■
Mary Ann Boes
Jamie Bond
Claudia Phillips Bowman ■
Aaron Brogdon ■
Dr. Daniel Brue
Dr. and Mrs. Rico Buchli
Drs. Manisha and Amal Chakraburty
Nagesh Chopra
Dr. Caleb Cook ■
Mr. and Mrs. W.E. Cromwell
Dr. Nancy Dawson
Brant Day
Lisa Day
Dr. Ann and Brian Dell
Dr. and Mrs. Ryan Dennis ■
Dr. Yifei Dong and Luping Wang
Dr. Kelley Dowd
Dr. Gloria N. Dupree
CMSgt (Ret.) and Mrs. Charles F. Dusenbery
Gary Ellis
Kiley and Shane Feely
Scott Fitzgerald
Jenny Fottle ■
Marian Free ■
Iva Goldsmith ■
Shannon Gorbet
Robert Hamm and Ingrid Young
Dr. and Mrs. Karlos K. Hill
Jasmine Htoon ■
Stacy Vanderhoof Hurst
Intel Foundation
Mr. and Mrs. Robert Ivey
Dr. Jummy Jaji-Drew ■
Dr. and Mrs. Michael Jordan
Sharon and Donald Jorski
Dr. and Mrs. David Kighuradze

Mr. and Mrs. Lawrence R. King
Mr. and Mrs. Alan Kirkpatrick
H. Martin Koch ■
Sally B. Koch
Mr. and Mrs. Philip Lance
Dr. Caleb Lareau ■
Austin LaRue ■
Julia Layne ■
Mr. and Mrs. Jeffrey Levin
Dr. and Mrs. Mark Li
Dr. and Mrs. Victor Lindsey
Julia Liuson
Mr. and Mrs. Randy Malone
Dru and William Marseilles
Dr. Lara Whittington Mashek ■
Max McGee Rev. Trust
Mr. and Mrs. Bill McMartin
Jennifer Meason
Dr. Sharon F. Neuwald
Whitley O'Connor ■
Dr. Jessica Oehrlein ■
Joyce and David Pagels
Cynthia Parish
Monika and Dr. Jaroslaw Paszkowiak
Jeffrey and Jenny Birnbaum Peet ■
Hal Pennington
Timothy Phillips
Mr. and Mrs. Gaylon Pinc, P.E.
Rebecca Porter Pomeroy ■
Dr. and Mrs. J.F.M. Post
Destiny Reeves ■
Dr. C. Kyle Renshaw ■
Sandra Stiles Roberts ■
Mr. and Mrs. Clarence Rose
Mr. and Mrs. L.A. Roth, Sr.
Dr. and Mrs. Jayanta K. Rudra
Margaret Salyer
Mr. and Mrs. Ronald L. Scott
Dr. Anjan Shah ■
Nimesh Shah ■
Donald R. Shaw
Phyllis and Tony Shelby
Jean Shultz and John Hogard
Alex Speir ■
Jacquelynn V. Stewart ■
Mr. and Mrs. Nate Stone
Dr. James Tattersall
Mr. and Mrs. John te Velde
Gus Thompson
Jessica Oliver Todd ■
Patricia Tracy
Mr. and Mrs. Don Turvey
United Health Group
Mr. and Mrs. Dan Vossen
Linda Waters
Andrea Weatherford
Brandee Weese ■
Joel Wellnitz
Dr. Jack Werner and Suzanne Broadbent
Jennifer Ward Whalen ■
Dr. Joseph H. Williams
Dr. and Mrs. Jiahong Wu
Dr. Kimberly Yang ■
Daniel Yao ■
BUSINESSES
AmazonSmile.org
AmerisourceBergen Global Services
Anonymous
Arvest Bank
AT&T Oklahoma
Boeing Company
Chickasaw Nation
ConocoPhillips
Delaware Resource Group
Express Employment Professionals
First United Bank
FuelCo
Google (via Tides Foundation)
Google Matching Gifts Program
Heritage Trust Company
Hitachi Computer Products (America), Inc.
Holcim US (formerly Lafarge)
Intel Foundation
Marathon Oil
Microsoft Matching Gifts Program
Northrop Grumman Foundation
Oak Ridge Associated Universities

OGE Energy Corporation
Oklahoma Aeronautics Commission
Oklahoma Arts Council
Oklahoma Natural Gas Company
Oracle Corporation - Matching Gifts Program
Phillips 66 Company
Shell Oil Company Foundation Matching Gifts
UHG-United Health Group
Winfield Investments LLC
Yukon Door & Plywood, Inc.
FOUNDATIONS
American Fidelity Foundation
Anonymous
Arnall Family Foundation
H. A. and Mary K. Chapman Charitable Trust
E. L. and Thelma Gaylord Foundation
Fred Jones Family Foundation
Kerr Foundation, Inc.
Kirkpatrick Foundation, Inc.
The Meinders Foundation
Samuel Roberts Noble Foundation
Oklahoma City Community Foundation
Oklahoma Medical Research Foundation
Presbyterian Health Foundation
Rainbolt Family Foundation
Sarkeys Foundation
Stone Family Foundation
Tulsa Community Foundation
MEMORIAL GIFTS
Annette Duffy
Given by Bill Cook
Dr. and Mrs. Daniel Hodges
Given by Terri Pickering
Mrs. Prudence Little
Given by James and Elyse Hatcher
Robbie Mudroch, Class of 2012
Given by Dr. Jessie Oehrlein
Dr. Robert Olson
Given by Pam Felactu
Prof. Daryl Schwerdtfeger
Given by Anonymous
Given by Kiley Feely/Burlington Class of 1997
Given by Pam Felactu
Given by Dr. Edna Manning
Given by Elizabeth Schwerdtfeger
Given by Max McGee Revocable Trust
Given by Clarence and Nancy Rose
Mrs. Jeri Thomas
Given by Pam Felactu
Given by Molly and Paul Wehrenberg
Jason Williams, Class of 1999
Given by Philip Azar
Given by Aaron Brogdon
Given by Brant Day
Given by Scott Fitzgerald
Given by Jasmine Htoon
Given by Dr. Heath Mueller
Given by Dr. Brad and Laurie Pillow
Given by Cory Schneberger
Given by Dr. Matt Thrasher
Given by Dr. Kimberly Yang
Sen. Penny Williams
Given by Dr. Joseph H. Williams
HONORARIA
Dr. Andrew Bucki
Given by Dr. Graham Mueller
Class of 2002 20th Anniversary
Given by Dr. Jummy Jaji-Drew
Given by Mr. and Mrs. Eric Tong
Dr. Kenneth Lease
Given by Pam Felactu
Given by Dr. Edna McDuffie Manning
Dan Little
Given by Harris and Eliza Kempner Fund
Given by Gregg Massey - First United Bank
Given by Tony Shelby
Given by Anne and Dr. Gregory Skuta
Given by Alexander H. Weisberg
Dr. Edna McDuffie Manning
Given by Dr. Bryan Eastin
Given by Pam Felactu
Gabriella Mutschler, Class of 2007
Given by Cynthia and Gerald Geletzke
Vera te Velde, Class of 2003
Given by John te Velde
Coach Dan Vossen
Given by Nicholas Bailey
Dr. Frank Y.H. Wang
Given by Pam Felactu

ALUMNI (BY CLASS)

CLASS OF 1992

Dr. Danny Bohl
Dr. Susan Dusenbery Bohl
Nimesh Shah

CLASS OF 1993

Chris Chavis
Sandra Stiles Roberts
Dr. Anjan Shah

CLASS OF 1994

Dr. Cari Combs
Rev. Sara Dillard Bodenstein
Major James T. Dunlap, M.D.
Marian Meacham Free
Brenton A. Phillips

CLASS OF 1995

Capt. Sean T. Curtin
Teresa Dietrich
Amanda C. Jones
Dr. Lara Whittington Mashek

CLASS OF 1996

Kristine Turvey Baranski
Scott Blomquist
Claudia Phillips Bowman
Carol Lin
Robyn Grinsteiner Miller
Chris Nusbaum
Dr. Kyle Pollard Pudenz
Jennifer Ward Whalen
Connie Zhai

CLASS OF 1997

Dr. Bryan Eastin
Dr. Raha Nael
Jodie Treeman
Dr. Nathan Valentine
Kyle Wichert

CLASS OF 1998

L. Jonathan Brunsman
Dr. Steven Meier
Pamela T. Olson
Jenny Birnbaum Peet

CLASS OF 1999

Dr. Allison Cartwright Barnes
Aaron Brogdon
Dr. Latisha Camp Heinlen
Nicholas Johnson
Dr. Franki Lambert Smith
Lt. Col. Charles D. Laubach
Dr. Graham Mueller
Dr. Brad Pillow

Laurie Parker Pillow
Cory Schneberger
Dr. Matthew Thrasher

CLASS OF 2000

Dr. Sangeetha Dayalan
Dr. Kimberly Yang

CLASS OF 2001

Dr. Ryan Dennis
Dr. Ashley Friggel Walker
David Hoel

Dr. Heath Mueller

CLASS OF 2002

Dr. Jummy Jaji-Drew
Eric A. Tong

CLASS OF 2003

Alyssa Manning
Dr. C. Kyle Renshaw

CLASS OF 2005

Rebecca Porter Pomeroy

CLASS OF 2006

Dr. Otis Chodosh
Maj. Joy Lomheim Nguyen

CLASS OF 2007

Julia Layne
Alex Speir

CLASS OF 2008

Laura Moon
Zhaoyang Xu

CLASS OF 2009

CLASS OF 2010

Jasmine Htoon
Whitley O'Connor
Onkur Sen
Dr. Mubeen Shakir

Jacquelynn V. Stewart
Dr. Matthew Stewart

CLASS OF 2011

Eli A. Adair
Dr. Caleb Cook
Iva Goldsmith
Moriah Donaldson Greggs
Dr. Caleb Lareau
Jessica Oliver Todd

CLASS OF 2012

Tyler Carter
Todd Edmonds
H. Martin Koch
Austin LaRue
Dr. Jessica Oehrlein

CLASS OF 2013

Destiny Reeves

CLASS OF 2017

Ingrid Yingjie Gao
Daniel Yao

OSSM GIVING GROUPS

AWESOME FRIENDS

Ms. Cecilia Abrams
Mrs. Kathleen Abshere *
Mrs. Ann Simmons Alspaugh *
Mrs. Catherine Armitage
Ms. Sue Ann Arnall
Mrs. Nancy Arnold
Mrs. Jane Austin
Mrs. Maxine S. Austin *
Mrs. Pat Bailey
Mrs. Antoinette M. Baker
Mrs. Barbara A. Baker
Mrs. Jan Barrick
Mrs. Gene Barth *
Mrs. Wanda Bass *
Dr. Mary Ann Bauman
Mrs. Lu Beard
Mrs. Julie Shdeed Beffort
Mrs. DeDe Benham
Mrs. Louise Gaylord Bennett
Mrs. Carolyn Berry *
Mrs. Marilyn Bethea
The Honorable Deborah Blackburn
Mrs. Hilarie Blaney
Mrs. Elizabeth Warren Blankenship
Mrs. Lissa Blaschke
Mrs. Shirley Blaschke
Mrs. Lori Blumenthal
Mrs. Ann Bohanon
Mrs. Dolores Boyle *
Mrs. Nell Hathorn Bozalis *
Mrs. Sharon Bozalis
Mrs. Patricia Brandt *
Mrs. Sharlene S. Branham
Mrs. Sara Brown
Mrs. Cheryl N. Browne *
Mrs. Carleen Burger
Ms. Nancy Burger ■
Ms. Bernice Butkin *
Mrs. Sara Jane Bynum *
Mrs. Jo Carol Cameron *
Dr. Patricia Capra
Mrs. Beverly R. Carter
Mrs. Nancy G. Cheek *
Mrs. Bess Clay *
Mrs. Helen Prentice Cleary *
Mrs. Mary Clements *
Mrs. Elizabeth Merrick Coe *
Mrs. Catherine Coffman
Mrs. Kaye L. Cook *
Mrs. Barbara J. Cooper
Mrs. Melinda Cox
Mrs. Betty Crow
Mrs. Peggy Cummings
Mrs. Suzanne Cunningham
Mrs. Jean Dale *
Mrs. Anne J. Dalton
Mrs. Nancy J. Davies
Mrs. Nancy de Cordova *
Mrs. Marion B. DeVore *
Ms. Teresa Dietrich ■
Dr. Dorothy V. Dodd
Ms. Suzanne Donnolo
Mrs. Anne Dougherty
Ms. Carole J. Drake

Dr. Gloria N. Dupree
Ms. Teri Durr
Ms. Evalie Edwards
Mrs. Susan Edwards
Mrs. Lyn Pryse Elam
Mrs. Patti Jo Elder *
Mrs. Lida Elkins
Mrs. Nancy P. Ellis
Mrs. Barbara Eskridge
Mrs. Christy Everest
Ms. Tricia Everest
Ms. Pam Felactu
Mrs. Mary Holbrook Ferguson
Mrs. Nancy Ford
Mrs. Joan Frates
Mrs. Mary Frates
Mrs. Mex Frates *
Mrs. Josephine W. Freede *
Mrs. Connie Givens
Ms. Nedra R. Funk
Mrs. Carol M. Gilliland *
Ms. Connie Givens
Mrs. Laurie Givens
Mrs. Vicki Gourley
Mrs. Betty D. Green *
Mrs. Virginia H. Greenberg
Mrs. Nancy Greer
Mrs. Kirsten Griffin
Ms. Jean Gumerson *
Mrs. Julie Carrington Hall
Mrs. Karen Hall
Mrs. Ann Halligan
Mrs. Kirk Hammons
Mrs. Ann Hargis
Ms. Holly Healey
Mrs. Angie R. Hester *
Mrs. Bette Jo Hill
Mrs. Susan Samis Hoffman
Mrs. Ciane Hogan
Ms. Jill Hogan
Ms. Lisa Hogan
Mrs. Sarah Hogan
Mrs. Shawn Hogan
Mrs. Elaine B. Honnold *
Mrs. Ann Hoover *
Dr. Leslie Hudson
Mrs. Sally Hughes
Ms. Alice C. Hurst *
Mrs. Sue Ann Hyde
Mrs. Betty Jackson *
Ms. Amanda C. Jones ■
Ms. Marilyn Jones *
Mrs. Judy Jordan
Mrs. Carol Kasperreit
The Honorable Yvonne Kauger
Mrs. Cathy Keating
Mrs. M. Lynn Kelly
Mrs. Lou C. Kerr
Mrs. Jill Click King
Mrs. Virginia Kite *
Mrs. Marilyn M. Law
Mrs. Patti Leeman
Mrs. Jenee Lister
Mrs. Prudence Little *
Maj. Joy Lomheim Nguyen ■
Mrs. Judy Love
Mrs. Karen Luke
Dr. Laura L. Mackie
Ms. Carol P. Magness
Mrs. Joan S. Maguire
Mrs. Margaret C. Malloy
Ms. Mary Anne Malone
Dr. Edna McDuffie Manning
Ms. Eleanor Maurer *
Mrs. Kathleen McClendon
Mrs. D'Arline McCubbin
Mr. Richard McCubbin *
Mrs. Brenda McDaniel
Ms. Donna McKnight
Mrs. Nadine McPherson *
Mrs. Stephanie Meara
Mrs. Carolyn C. Mee
Mrs. Margy S. Messenbaugh
Mrs. Sandy Meyers
Mrs. Donna Moler *
Mrs. Helen A. Moore *

Ms. Rita Moore
Mrs. Jeanne Mullins
Mrs. Bonnie Naifeh
Mrs. Jeaneen Naifeh
Mrs. Valerie Naifeh
Dr. Donna J. Nelson
Mrs. Mary Nichols *
Mrs. Polly Nichols
Mrs. Susan Nickles *
Mrs. Donna Nigh
Mrs. Madalynne Norick *
Mrs. Liz Onwuchuruba
Mrs. Barbara Paul *
Mrs. Joan Payne
Mrs. Lori Payne
Mrs. Jenny Birnbaum Peet ■
Mrs. Barbara Perry
Mrs. Jeannine Rainbolt *
Mrs. Kim Rainbolt
Mrs. Geraldine Raupe *
Mrs. Nancy Records *
Mrs. Berta Faye Rex *
Mrs. Melba Rhinehart
Mrs. Jane Mullaly Rhodes
Ms. Judy Richardson
Mrs. Mozelle Richardson *
Ms. Susan Richardson
Mrs. Barbara V. Robbins
Mrs. Sandra Stiles Roberts ■
Mrs. Pamela Robinson
Mrs. Linda R. Rodgers
Mrs. Marianne B. Rooney
Mrs. Martha Parker Sadler *
Ms. Margaret S. Salyer
Mrs. Karen Samis
Mrs. Chelin Satherlie
Mrs. Shirley Shanker
Mrs. Pamela H. Shdeed
The Honorable Bernice Shedrick
Mrs. Mary Key Shipp
Ms. Jeanne Hoffman Smith *
Mrs. Cornelia Sneed *
Mrs. Elena Snell
Mrs. Sue Moss Sullivan
Mrs. Wanda Swisher *
Mrs. Beth Tolbert
Ms. Jo Curtis Towery
Mrs. Carol Wilkinson Troy
Mrs. Gladys H. Tucker *
Mrs. Betty Lou Upsher *
Mrs. Doretha Van Horn *
Mrs. Marilyn Warren Vandever
Mrs. Sharon Varnum
Mrs. Donna Vogel
Mrs. Anne Reniers Vose
Mrs. Katherine W. Walker
Mrs. Pat Becker Wallis
Ms. Jean M. Warren *
Mrs. Karin Z. Warren
Mrs. Ruth Bozalis Warren *
Mrs. Laura Warriner
Mrs. Betsy White *
Mrs. Anna Noel Williams *
Mrs. Martha Williams *
The Honorable Penny Williams *
Mrs. Helen L. Wilson
Ms. Mary Wilson
Mrs. Rebecca Wilson
Mrs. Donna K. Windel
Mrs. Carolyn Wright *
Ms. Connie Zhai ■
Mrs. Elizabeth Zoernig-Milam *
Mrs. Jill Zwahlen

AWESOME MEN

Dr. Michael Anderson
Dr. John Armitage
Mr. Keith E. Bailey
Mr. W. Lance Benham III
Mr. Clayton I. Bennett
Mr. William M. Blaik *
Mr. G. T. Blankenship
Dr. David R. Brown *
Mr. L. Jonathan Brunsman ■
Mr. Jerry R. Burger
Lt. John M. Burger M.D. ■
Mr. William Burger ■

Mr. Joel E. Champlin
Mr. Douglas Cummings *
Mr. Edwin de Cordova *
Dr. Bryan Eastin ■
Mr. James H. Everest
Mr. Lester Farmer *
Mr. Gary F. Fuller
Mr. Kirkland Hall
Dr. Don W. Haskins
Mr. Frank D. Hill
Mr. Dan Hogan
The Honorable Jerome A. Holmes
Mr. J. Clifford Hudson
Mr. Craig Jimenez
Mr. J. Mark Lester
Mr. Dan Little
Mr. Edmund O. Martin
Mr. Bill Mathis
Mr. Aubrey K. McClendon *
Mr. Robert J. McGrew ■
Mr. and Mrs. David McLaughlin
Mr. Frank A. McPherson
Dr. Joseph F. Messenbaugh III *
Mr. Robert Z. Naifeh *
Mr. John Nichols *
Mr. J. Larry Nichols
Mr. Ronald J. Norick
Mr. Roy T. Oliver
Mr. W.C. Payne *
Dr. Brenton Phillips ■
Mr. Ford C. Price *
Mr. Gene Rainbolt
Mr. George J. Records
Dr. Galen P. Robbins *
Mr. Patrick T. Rooney
Mr. Joseph F. Rumsey, Jr. *
Mr. Mike Samis *
Mr. Nathan Seidle ■
Mr. Ben Shanker
Mr. Lee Allan Smith
Mr. James Vallion *
Dr. Frank Y.H. Wang
Mr. E. Dean Werries *
Mr. Bruzzy Westheimer
Mr. Allen Wise
Mr. William R. Yinger, Sr. *
AWESOME ALUMNI \$10K CLUB
Lawrence J. Brunsman ('98)
Teresa Dietrich ('95)
Dr. Bryan Eastin ('97)
Maj. Joy Lomheim Nguyen ('06)
Chris Nusbaum ('96)
Jenny Birnbaum Peet ('98)
Brenton A. Phillips ('94)
Sandra Stiles Roberts ('93)
Nathan Seidle ('00)

AWESOME LEGACY SOCIETY

Anonymous
Anonymous *
Catherine and Jack Coffman
Linda Van Buskirk *
Jean M. Warren *
Megan Winchell Fox ■

* Deceased

■ OSSM graduate

Every effort has been made to ensure that the list of donors is correct. If your name is misspelled or omitted, please accept our sincere apologies and inform our offices at (405) 522-7804 or email us at development@ossm.edu. **Thank you!**

OSSM GOVERNING BOARD OF TRUSTEES

Mr. Dan Little, Chair – Madill	Dr. Kelley Dowd – Oklahoma City	Mr. Ron Mashore, P.E. – Choctaw
Hon. Tom Adelson – Tulsa	Mr. Gary Ellis – Coweta	Sen. Adam Pugh – Edmond
Ms. Apryl Beall – Oklahoma City	Mrs. Marian Free – Edmond	Mr. Steven Rhines – Ardmore
Mr. Lance Benham – OKC/Estes Park, CO	Ms. Rhonda Jones – Oklahoma City	Mr. James Roller – Cashion
Mr. Jerry Burger – Oklahoma City	Dr. Michael Jordan – Shawnee	Mr. Geoffrey Simpson (OSSM ‘93) – Tulsa
Mr. Jack Coffman – Oklahoma City	Dr. Lara D. Mashek (OSSM ‘95) – Shawnee	Ms. Donna Windel – Ardmore

EX-OFFICIO MEMBERS:

Mr. Ryan Walters – Oklahoma City	Mr. Michael C. Turpen – Oklahoma City	Dr. Kirsten Olds – Tulsa
Chancellor Allison Garrett – Oklahoma City	Dr. Keith Garbutt – Stillwater	Dr. David Wrobel – Norman

OSSM FOUNDATION BOARD OF TRUSTEES

EXECUTIVE COMMITTEE:

Katie Altshuler, Chair – Oklahoma City	Steve Wood, Treasurer – Oklahoma City	Lou Kerr – Oklahoma City
Lisa Day, Vice Chair – Oklahoma City	Jan Barrick – Oklahoma City	Linda Rodgers – Oklahoma City
Jerry Burger, Secretary – Oklahoma City	Lance Benham – Oklahoma City	Warren Thomas – Purcell

TRUSTEES:

Nancy Anthony, Ph.D. – Oklahoma City	Lloyd Hardin, Jr. – Oklahoma City	Hal Pennington, J.D. – Owasso
Kristine Baranski (OSSM ‘96) – Portland, OR/Yukon	D. Aaron Harmon – Enid	Brenton Phillips (OSSM ‘94) – Plano, TX
Bart Binning, Ed.D. – Oklahoma City	David Hill – Oklahoma City	Robert Reynolds, M.D. – Oklahoma City
Lissa Blaschke – Oklahoma City	Karlos K. Hill, Ph.D. – Norman	Russell Rother, Ph.D. – Steamboat Springs, CO
Daniel Brue, Ph.D. – Oklahoma City	Shannon Hill – Oklahoma City	Harry V. Rouse – Tulsa
Rico Buchli, Ph.D. – Edmond	Anne Holzberlein – Edmond	Meg Salyer – Oklahoma City
Joel Champlin – Enid/Dallas	Sue Ann Hyde – Oklahoma City	Thomas Sell – Broken Arrow
C. Dakota Cole – Ada	Bradley W. Krieger – Oklahoma City	Eric Sherburn, M.D. – Tulsa
Ryan Dennis, M.D. (OSSM ‘01) – Oklahoma City	Philip Lance – Edmond	Molly Wehrenberg – Edmond
Teresa Dietrich (OSSM ‘95) – New York, NY	Shane Lindstrom – Oklahoma City	Johnny Whitfield – Oklahoma City
Todd Edmonds (OSSM ‘12) – New York, NY	Jennifer Meason – Walters	Mark Wright – Norman
Gary F. Fuller – Naples, FL/OKC	Rob Miner – Oklahoma City	
Gabe Gilliam, D.Min. – Oklahoma City	Sam Ott – Norman	

LIFETIME TRUSTEE:

Edna McDuffie Manning, Ed.D.,
OSSM (Founding) President Emerita
Lexington

ADVISORY TRUSTEES:

Ken Fergeson – Altus
Jean Leger, Jr. – Oklahoma City
Bruzzy Westheimer – Ardmore

HONORARY TRUSTEE:

Sarah Hogan – Oklahoma City

EX-OFFICIO MEMBERS:

Dan Little, Esquire, Chairman, OSSM – Madill



**Donate to the continued success and accomplishments
of OSSM students through this QR code!**

(405) 522-7804

1141 N LINCOLN BLVD
OKLAHOMA CITY, OK, 73104



**OKLAHOMA SCHOOL of
SCIENCE and MATHEMATICS**
FOUNDATION

WWW.OSSMFOUNDATION.ORG