



OKLAHOMA SCHOOL of  
SCIENCE and MATHEMATICS  
FOUNDATION



# 2018-19 ANNUAL REPORT

1141 N LINCOLN BLVD  
OKLAHOMA CITY, OK, 73104

## OSSM MISSION

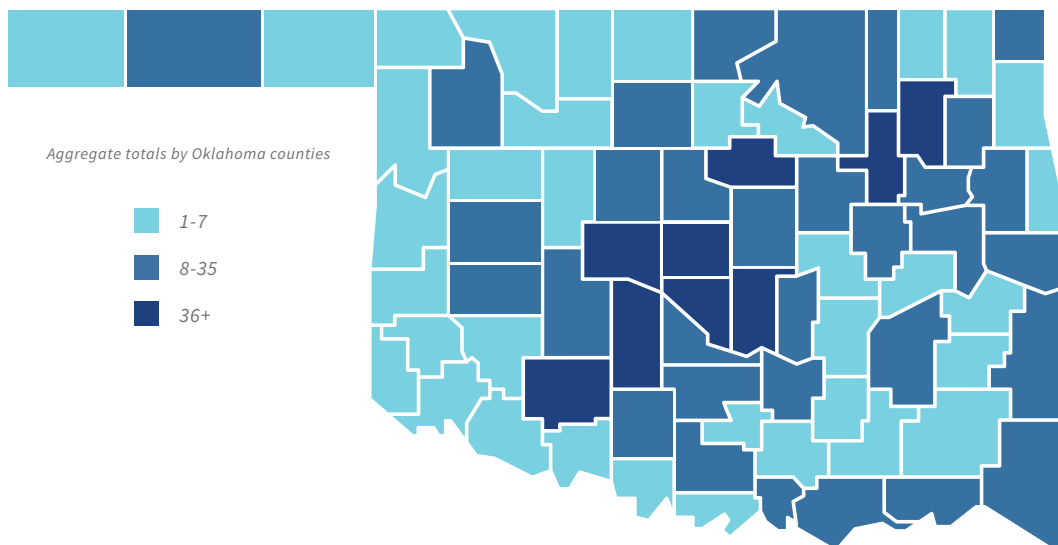
The mission of the Oklahoma School of Science and Mathematics is to:

- **Educate students** who show promise of exceptional academic development through a program of instruction and discovery that challenges them far beyond the traditional high school model, imparting a superior foundation for careers in science, technology, engineering, and mathematics fields
- Serve as a **catalyst for advancing public school STEM education in Oklahoma** by providing residential, regional, summer, and virtual learning programs that extend advanced science and math education to a diverse student demographic
- **Inspire students to make a difference** in the State of Oklahoma and the world by leveraging their knowledge and curiosity for the betterment of mankind

## OSSM FOUNDATION MISSION

The mission of the OSSM Foundation is to foster excellence in K-12 science and mathematics education throughout Oklahoma by supporting the Oklahoma School of Science and Mathematics' outreach projects, programs, development, students, staff, and faculty.

## GRADUATES (1992-2019)



## MESSAGE FROM THE PRESIDENT

Dear Friend of OSSM:

Thank you. Without the generous support from private individuals, business and industry, as well as charitable foundations/organizations, OSSM would not be able to fulfill its mission of providing Oklahoma's young people with the opportunity to learn and apply advanced STEM knowledge.

Your generosity has allowed OSSM to welcome its largest incoming class of juniors ever! Combined with seven satellite locations—at Drumright, Enid, Okmulgee, Poteau, Stilwell, Tahlequah, and Wayne—and our Virtual Regional Center, where students receive instruction via live interactive video combined with face-to-face visits with an instructor and hands-on labs, nearly 300 students from across Oklahoma receive a world class education taught by largely PhDs.

My overall goal is that OSSM will touch the lives of each and every student in Oklahoma who aspires to a STEM career—via day workshops for elementary and middle school students, through our week-long residential summer academies, through our regional centers and virtual regional center, or through their teachers who participate in teacher training workshops on the OSSM campus.

We are proud to be part of the economic engine of Oklahoma and to train succeeding generations of this country's physicians, scientists, and engineers.

Sincerely,

**FRANK WANG, PH.D.**  
*President, OSSM*



## MESSAGE FROM THE CHAIRMAN

OSSM has had an incredible year and is excited to welcome the largest junior and senior classes in the history of the school for the 2019-2020 school year.

This summer, nine rising OSSM seniors traveled to Washington, DC to compete in the national finals of TEAM+S (Testing of Engineering Aptitude in Math and Science). The OSSM team brought home the first-place trophy for Engineering Computation, which is a win for OSSM and the state of Oklahoma.

OSSM is a shining star for Oklahoma. Our school ranks as one of the top high schools in the nation each year and was named the #1 Best High School in Oklahoma for 2019 (niche.com). OSSM students and alums continue to be successful in their endeavors because of the competitive quality of their academic education.

We need your help. OSSM's greatest current need is to strengthen its Computer Science Program. An endowed Computer Science Chair is needed to bridge the gap, but your help is critical to achieve this goal.

In addition to asking for your financial support, OSSM also wants to encourage you to get involved. We have many volunteer opportunities available and fantastic events to attend, including Quantum Experience. We hope you choose to invest with us today. To paraphrase Ben Franklin, "an investment in our children's education pays the best interest."

All the best,

**SARA BROWN**  
*Chairman, OSSM Foundation*



**To help transform student lives through advanced academics, consider making a donation today at**  
[www.ossmfoundation.org/ways-to-give](http://www.ossmfoundation.org/ways-to-give)



Follow us on Facebook at OSSM Edu



# RESIDENTIAL

## Immersion model supports students' academics

OSSM is a state funded, two-year **residential high school** for Oklahoma juniors and seniors with ability and interest in science and math. Nationally recognized as a top performing high school, OSSM challenges students *far* beyond the traditional high school model. Everything at OSSM supports students' academics—from the school's residential immersion model, college-level curriculum, and largely doctoral-level teaching faculty (75%) to required evening study halls staffed with faculty, peer support, and limited cell phones and personal internet. Students leap forward in their academic progress, with many OSSM graduates receiving numerous credits for their OSSM classes at their chosen institutions of higher learning.



**OSSM is growing! Largest incoming junior and senior classes ever!**

# STATEWIDE

## Bringing advanced education to students across Oklahoma

OSSM also operates seven **Regional Centers** in rural areas across the state located in partnering Career Techs, providing students with calculus, calculus-based physics, and other advanced courses near their homes.

OSSM operates rural Regional Center programs in Drumright, Enid, Muskogee, Okmulgee, Poteau, Tahlequah/Stillwell, and Wayne.

OSSM's **Virtual Regional Center** program works with students and school districts across the state to allow students anywhere in Oklahoma to receive daily interactive instruction online in calculus, calculus-based physics, and other courses AND to receive full face-to-face labs brought to them regularly by our accomplished OSSM instructor. **We want to partner and collaborate with more school districts to increase the scope of STEM curriculum they can offer their students!**

- Join Ardmore, Coweta, Elk City, Norman, Poteau Public Schools!
- New in 2019/2020! Altus and OKC Public Schools!



*Class of 2019 students receive certificates of completion earned from OSSM's Drumright Regional Center at the Central Technology Center there this past May.*

## Students from across Oklahoma participate in OSSM's annual Middle School Math Contest during the school year.



*2019 OSSM Middle School Math Contest 7th Grade Female winner Becca Armstrong!*

## MENTORSHIPS, INTERNSHIPS—OH MY!

Mentorships and summer internships are just two ways OSSM and its students partner with Oklahoma STEM businesses, even while still in high school.

About half or more of OSSM seniors are typically involved throughout the school year in mentorships with professionals in their areas of special interest—engineers, medical researchers, computer scientists and more. As seniors, OSSM students are academically prepared much like typical college freshmen or even sophomores, and they are excited about doing real, relevant work with and for their project mentors.

Many outstanding organizations mentor OSSM students. A few include the **Oklahoma Medical Research Foundation**, **Dean McGee Eye Institute** and other research entities in the **OU Health Center** (medical & bioscience research); **Baker Hughes—A GE Company** (engineering); **NextThought** (computer science), and **many more**.

OSSM transports students to and from their mentorships, and the students work about 4-6 hours per week with their mentors. Student mentorees receive no pay, but they receive very valuable hands-on, real life experience and make wonderful career connections.

Some OSSM faculty also mentor students interested in their own research in directed studies. **Dr. Shayne Johnston**, long-time OSSM physics professor (Ph.D. Plasma Physics, Princeton), mentored Albany B. (Deer Creek-Lamont H.S., Lamont) this past year in her physics project entitled “Self-Excitation, Parametric Forcing, and Chaos in the Dynamics of Dust-Grain Charge in Dusty Plasmas.” The intensive research Albany did with Dr. Johnston together with all the rigorous academics she undertook at OSSM earned her generous scholarships which will allow her to continue studying physics this fall at Harvey Mudd College.



This past summer, The Boeing Company completed its third summer internship program including advanced high school students. Several students from OSSM participated and were thrilled to have the opportunity to work full time over the summer on real engineering, computer science, and other STEM projects with Boeing for pay!

**“OSSM students are among the next generation of innovators,” said Rob Miner, Career Growth Specialist for Boeing in Oklahoma City. “It’s exciting for us at Boeing to partner with schools like**

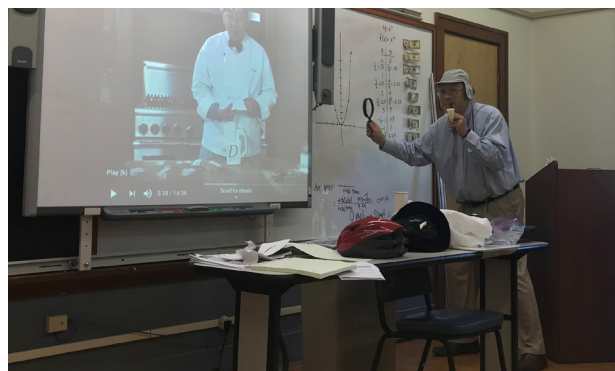
**OSSM to develop a pipeline of diverse and highly talented future employees who will ultimately lead us into our second century. Our goal is to develop relationships with top students early to help us attract and retain the best talent as we help them develop their careers.”**

For these bright, motivated, and highly prepared young people, these early connections can create strong relationships lasting throughout college and beyond. They can even develop into fulfilling and very productive careers with these great organizations!

## SUMMER PROGRAMS

OSSM engages students statewide through **summer program** offerings:

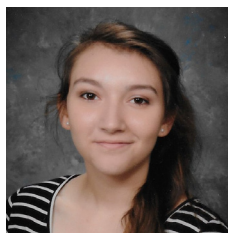
- Middle School Math & Science (one-day) Workshops sponsored by Williams Companies
- Middle School Math & Science Teachers’ Institutes sponsored by the Sarkeys Foundation (math) and by ConocoPhillips and Phillips 66 (science)
- The OSSM Summer Academies – Two separate week-long STEM camps for high school students (fee-based)



OSSM President Frank Wang taught at the first of two Summer Academies. His “Calculus, A Gentle Introduction” class is a 5-day program in which he uses different hats to illustrate key concepts. In this class, he was a mathematician as detective.

**OSSM graduates are doing outstanding work and making a positive difference all over Oklahoma as well as across the nation and around the world! There are so many “awesome” stories. Here are just a few!**

See more “awesome” OSSM graduate stories at [www.ossmfoundation.org](http://www.ossmfoundation.org) under the “Your Impact” tab.



**“Coming from rural Oklahoma, my ambition to be an aerospace engineer didn’t draw out many peers or mentors from my community. Besides the academic growth that came from attending, OSSM impacted me by helping me grow extensive peer and professional networks, which have since led to several exclusive opportunities. Since graduating in Spring 2018, I have completed two summer internships with The Boeing Co. and written a proposal accepted by NASA.”**

————— *Braxton B., Class of 2018 (Woodward H.S.)*



## **Making Scientific Advances**

**BRYAN EASTIN, PH.D. | OSSM CLASS OF 1997** (*Collinsville H.S.*)

*Physicist, Northrop Grumman Corporation*

*B.S. Physics, Caltech, 2001*

*Ph.D. Physics, University of New Mexico (Dissertation Work in Quantum Error Correction), 2007*

*NRC Postdoctoral Fellow at NIST Boulder, 2007-2009*

*NIST Boulder Postdoc, 2009-2010*

Dr. Eastin studies quantum computation at Northrop Grumman Corporation where he leads a small team of theoretical physicists. Their work focuses on fault-tolerant quantum error correction, magic-state distillation, and related topics. This theoretical work is part of Northrop Grumman’s larger effort in superconducting quantum devices and superconducting electronics. Dr. Eastin is best known in academia for the Eastin-Knill Theorem, which states that a non-trivial quantum code cannot have a universal, transversal, unitary gate set.

## **Commitment to the Community**

**LATISHA HEINLEN, M.D., PH.D. | OSSM CLASS OF 1999** (*Laverne H.S.*)

*Rheumatology & Internal Medicine*

*B.S. Microbiology, University of Oklahoma*

*M.D./Ph.D. OU College of Medicine*

Latisha’s folks still have the ranch near Laverne, Oklahoma where she grew up. During her senior year at OSSM she met Dr. Judith James and Dr. John Harley through the OSSM mentorship program that placed her at the Oklahoma Medical Research Foundation. She continued to work in their research labs after graduation and during her undergraduate training at the University of Oklahoma. Latisha attended medical school and graduate school at the University of Oklahoma and received her M.D. and Ph.D. in Pathology with Dr. James as her mentor. After graduation she completed Internal Medicine residency and fellowship in Rheumatology. In 2017, Latisha opened her own practice, Rheumatology Associates of Oklahoma.



In addition to running a busy practice in a much-needed specialty, Latisha and her husband, Jonathan, also a practicing physician in Oklahoma city, have three girls ages 6, 10 and 14, love to travel when possible, and enjoy the kids’ soccer weekends.



## Achieving Life Goals

**MARTY SCANTLEN, D.D.S.** | **OSSM CLASS OF 1997** (*Thackerville H.S.*)

*General Dentist, Chickasaw Nation Department of Health, Purcell  
B.A. History, University of Oklahoma  
D.D.S. OU Health Sciences Center*

Growing up, Marty Scantlen dreamed of doing something in the medical field, so she always pursued math and science in school. A member of the Kiowa Tribe of Oklahoma herself, she now serves Native people daily in her work, which has been one of her life goals. Marty volunteers each year with the Oklahoma Mission of Mercy free dental clinic and is an amateur balloon artist. She often volunteers making balloon animals at children's events. Marty lives in Norman with her husband Andrew and their two sons, Isaac and Miles. In her spare time, she enjoys musical theater and learning new trivia, in hopes of one day being a contestant on Jeopardy.



## Excellence in Defense of our Nation

**REBECCA A. PORTER** | **OSSM CLASS OF 2005** (*Putnam City West H.S.*)

*Project Lead & Design Engineer, Boeing Defense  
B.S. Mechanical Engineering, University of Texas—Tyler*

As a young girl, Rebecca never dreamed of being an engineer when she “grew-up.” Coming from a humble background she never knew it was even a possibility. The exposure to advanced math and science courses, culture and arts, as well as volunteer work at OSSM significantly impacted her future for the better. Today, she is passionate about being an engineer with Boeing supporting the modernization of the Airborne Warning and Control System (AWACS) platform.

Rebecca enjoys traveling with her partner Jeff, caring for their two perfect pups, attending classical music concerts, promoting STEAM education and various other non-profit works. Presently, she serves as Secretary for the Oklahoma Virtuosi Chamber Orchestra Board.



## Seeking Answers for the Future

**SHELLY M. FINLEY, M.S.** | **OSSM CLASS OF 1993** (*Dover H.S.*)

*Deputy Program Manager, GeoCarb Mission Collaboration, University of Oklahoma  
B.S. Physics-Space Science (Chemistry & Math minors), Northwestern State U. of Louisiana, 1999  
MS in Physics (Chemical Engineering Minor), U. of Louisiana at Lafayette, 2001  
Albert Einstein Distinguished Educator Fellow, NSF Division of Polar Programs, 2011-2012  
Science & Technical Project Services Supervisor – South Pole, Antarctic Support Contract, Lockheed Martin, 2012-2017*

Shelly Finley achieved the remarkable distinction of managing the Amundsen-Scott South Pole Station for 13 months over winter in 2013-2014 for ASC Lockheed Martin. She is now back home in Oklahoma helping head up GeoCarb, a new nine-year climatological project in Norman under the largest federal contract in the University of Oklahoma's history. GeoCarb is a complete mission to build a carbon cycle observatory and place it on a commercial satellite in geostationary orbit. Data collected by GeoCarb will provide carbon dioxide, carbon monoxide, and methane concentrations and fluxes with unprecedented precision.

Shelly is a founding member of The Mars Society (along with Buzz Aldrin and James Cameron). She had the unique opportunity to meet Buzz Aldrin at the South Pole in 2016.

See more about OSSM academics, faculty, and programs at

[WWW.OSSM.EDU](http://WWW.OSSM.EDU)



# OSSM BY THE NUMBERS

## PROVEN RESULTS

OSSM students leap forward in their academic progress, and graduates often receive numerous credits for their OSSM classes at chosen institutions of higher learning.

OSSM students consistently test higher than the national average in ACT & SAT scores and are also outperforming other National Consortium of Specialized STEM Schools (NCSSS) averages.



OSSM ranked #1 Best High School in Oklahoma 2019

OSSM's rising senior team took 2019 Best in Nation in Engineering Computation this summer in national finals of TEAM+S (Testing of Engineering Aptitude in Science and Mathematics)! OSSM's Class of 2019 included:

- Increased Class average ACT Composite from **29** to **32.15**
- **17** National Merit Scholar Finalists
- **4** QuestBridge Scholars
- **4** perfect ACT scores
- **30** Student Research Mentorships
- **2** U.S. National Chemistry Olympiad Semifinalists
- **1** U.S. National Astronomy Olympiad Semifinalist
- **1** Regeneron Science Talent Search Scholar
- **3** Oklahoma Academic All State Awardees
- Earned some **\$11 million** in merit-based scholarships
- National Science Bowl Team State and Regional Champions



**"This school has pushed me to excel both inside and outside the classroom and has provided me with unique opportunities, such as taking college-level classes and doing**

**research at OU Health Sciences Center. It has given me the chance to meet with lifelong friends from all over the state and grow with them over the course of two years. OSSM is definitely the most challenging thing I have ever done, but it has also been the most rewarding journey of my life."**

——— Kevin T., Class of 2020 (Deer Creek H.S., OKC)

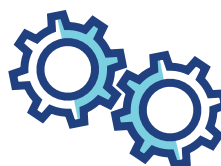
## FURTHER EDUCATION

Of OSSM's 1,722 graduates through 2019, approximately half are still pursuing higher education, **more than half attended college in Oklahoma**, and some **60% are living and working in Oklahoma**. Of those now in the workforce, more than a third are practicing engineers, another third are in medicine and bioscience, and the rest are in computer science & MIS, economics & finance, applied & computational math, chemistry & physics, research, business, law and more.



**\$40 MILLION**

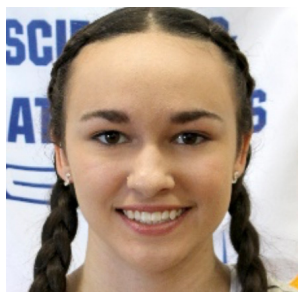
*in economic activity is generated for Oklahoma by OSSM and its alums annually, according to a recent independent study.*



**85%**

*are staying in STEM related fields for their careers!*





**“OSSM has given me a rigorous environment that has allowed me to grow not only as a student but as a person. Being here has allowed me to gain a passion for learning and to build an academic support system of classmates and faculty that are constantly encouraging me to better myself, shaping how I have chosen to continue pursuing academics in my future.”**

*Sami R., Class of 2020 (Enid H.S.)*

## OSSM CLASS OF 2019 COLLEGE MATRICULATIONS

Baylor University	Massachusetts Institute of Technology	Princeton University (2)	University of Notre Dame
California Institute of Technology	New York University	Rensselaer Polytechnic Institute	University of Oklahoma (26)
Carnegie Mellon University	Northwestern University (2)	Saint Louis University	University of Portland
Duke University (2)	Oberlin College of Arts and Sciences	United States Merchant Marine Academy	University of Southern California
Grinnell College	Oklahoma State University	University of California, San Diego	University of Texas, Austin
Harvard College		University of Central Oklahoma	University of Tulsa (3)
Harvey Mudd College			

## COURSE OFFERINGS (OSSM RESIDENTIAL PROGRAM)

College Level courses taught by largely Ph.D. faculty. See more at <https://www.ossm.edu/academic-departments/>

### MATHEMATICS

Pre-Calculus I, II, III	Abstract Algebra
Calculus I, II	Real Analysis
Multivariate Calculus	Special Advanced Problems
Differential Equations	Geometrics
Number Theory	Topology
Probability and Statistics	Foundations of Mathematics
Linear Algebra	

### BIOLOGY

Anatomy & Physiology	Endocrinology
Biochemistry	General Zoology
Molecular & Cellular Biology	Plant and Soil Science
Embryology	Microbiology
Genetics	Intro to Neuroscience

### COMPUTER SCIENCE

Intro to Computer Science	Computer Networking
Object-Oriented Programming with Java	Computer Architecture & Assembly Programming
Data Structures I & II	Special Topics in Computer Science
Operating Systems	

### HUMANITIES

American Literature	Western Civilization
World Literature	East Asian History
American History	Arab Civilization

### PHYSICS

General Physics	Special Topics in Theoretical Physics
Mechanics	Exploration Geosciences
Electricity and Magnetism	
Astronomy	
Intro to Modern Physics	
Modern Physics II	
Thermal Physics Waves & Optics	

### ENGINEERING

Robotics Engineering	Complex Analysis
Electronic Circuits	Geoscience Seminar (Intro. to Petroleum Engr.)
Assembly Language	

### CHEMISTRY

General Chemistry I & II	Chemical Equilibrium
Organic Chemistry I & II	Chemistry Olympiad Prep/Directed Study
Biochemistry	

Many thanks to OSSM Class of 1997 alumnus **Dr. Bryan Eastin** (see more about Bryan on page 6) for making an amazing matching gift of \$50,000 at the end of 2018! Bryan's gift matched other alums' giving to the Faculty Endowment and is, thus far, the largest gift given by an OSSM alum. We are so grateful to Bryan and to all our many alumni and alumnae giving back to OSSM to help provide more Oklahoma students each year with the transformative academics they experienced. *Thank you!*

---

**“A school is only as good as its teachers. Faculty Awards help to cover the gap between what Oklahoma will pay and what OSSM needs to pay to continue to have the most amazing faculty around.”**

---

*Bryan Eastin, Ph.D.*

## Sarkeys Foundation Ensuring Perpetual Excellence in Research & Teaching

A major partner since the early 1990s, the Sarkeys Foundation continues to help raise the bar of math and science education for Oklahoma students and teachers through generous support for OSSM capital projects and faculty programs. Sarkeys currently provides high quality professional development for Oklahoma middle school math teachers as sponsor of OSSM's annual Summer Math Institute.



The Sarkeys Foundation's most recent investment in OSSM, its students, and faculty was a \$250,000 grant made in 2018. This magnificent gift, together with tremendously generous gifts from **OSSM Chairman Dan Little and the Little Family**, have established an endowment for the **Sarkeys Chair for Research and Teaching Excellence**.

To honor his research acumen, superb teaching excellence, and outstanding contributions to OSSM and its students over more than two decades, we are pleased to announce long-time OSSM chemistry professor **Dr. A. K. Fazlur Rahman** as the inaugural beneficiary of this new endowment!

## Parents Association of OSSM

Parents of current OSSM students remain closely involved throughout the school year. Through the Parents Association of OSSM, their contributions provide for a plethora of activities and needs that enhance and enrich all OSSM students' experiences, including periodic performance or speaker outings, Prom, Winter and Spring dances, Senior Party, Teacher Appreciation reception, snacks of all kinds, and more. **Many thanks to our Parents!**





## Linda VanBuskirk (1948-2017) – Living Legacy

Born and raised in Oklahoma City, Linda VanBuskirk was a lovely woman whose career in research and training with the FAA spanned 41 years. She highly valued education and was so glad her beloved daughter Elizabeth, or “Liz,” had the opportunity to attend the Oklahoma School of Science and Math. A very bright and accomplished young woman, Liz graduated in the Class of 2004 and headed off to college, first to Texas Christian and then finishing her bachelor’s degree at the University of Central Oklahoma. Liz succumbed to cancer at age 23, but Linda always appreciated the experience Liz had at OSSM and the transformative resource it provides for so many bright young students. The OSSM Foundation received word earlier this year that Linda left an estate gift to benefit the Oklahoma

School of Science and Mathematics. Linda’s love for education will live on, benefiting more young Oklahomans for many years to come. We will always remember Linda and Liz and their passion for education, and we remain deeply grateful.

---

**“The Oklahoma School of Science and Mathematics is the #1 Best High School in Oklahoma!”**

To help transform student lives through advanced academics, consider making a donation today at [www.ossmfoundation.org/ways-to-give](http://www.ossmfoundation.org/ways-to-give)

---

*niche.com, USA Today (2019)*



## “The future of our state is education—pass or fail!”

Linda and Bill have long supported the Oklahoma School of Science and Math, investing their time, talent and treasure since the school’s very early years in its world class academics for Oklahoma students.

They met in college at the University of Oklahoma. Linda grew up in Oklahoma City from 6th grade on, attending Harding and NW Classen. Bill is from Blackwell, and after finishing law school he moved his family there so they could help care for his dad. He worked for McAfee Taft, then a small yet burgeoning firm, commuting to and from OKC. They stayed in Blackwell some 30+ years and were active in the local and statewide communities before moving back to OKC. After McAfee Taft, Bill went into banking, helping start MidFirst

Trust. Now “retired,” he is again working with McAfee Taft.

Linda was herself a teacher, teaching special education prior to having her own children. She has always been heavily involved in the community, and education has always been of major importance in her family. She served on the inaugural board of the Oklahoma Foundation for Excellence and helped start the Blackwell Public Schools Foundation. Sarah Hogan asked Linda to join the OSSM Foundation Board soon after it was formed in 1992, and she has served OSSM as a Foundation Trustee ever since.

Linda and Bill are proud of their three children—twin girls Elizabeth Inbody (Executive Director of the Jenks Public School Foundation) and Rachel Johnston (head of the Kerrville, TX Public School Foundation, and their son Trip Rodgers, a certified financial advisor in Dallas—and ten grandchildren.

Nothing is more important than education, they agree wholeheartedly. Linda loves hearing OSSM kids share their stories and seeing their excitement and pride in what they are achieving. She loves the opportunity OSSM provides, regardless of students’ family resources, for those willing to work so hard.



# OSSM FOUNDATION FINANCIALS

January 1 to December 31, 2018

## REVENUE, GAINS AND OTHER SUPPORT

### CONTRIBUTIONS

(net of discounts and allowances)

	WITHOUT DONOR RESTRICTIONS	WITH DONOR RESTRICTIONS	TOTAL
Undesignated	277,708		277,708
Restricted for specific purpose or time		594,738	594,738
Restricted in perpetual nature		278,275	278,275
Interest income (net of fees of \$40,449) (Note 5)	69,452	182,130	251,582
Net unrealized and realized gains (losses) on investments (Note 5)	(124,648)	(764,690)	(889,338)
Total revenue, gains, and other support	222,512	290,453	512,965
Net assets released from restrictions (Note 8)	546,577	(546,577)	
Total revenue, gains, and other support	769,089	(256,124)	512,965

### EXPENSES

#### PROGRAM EXPENSES

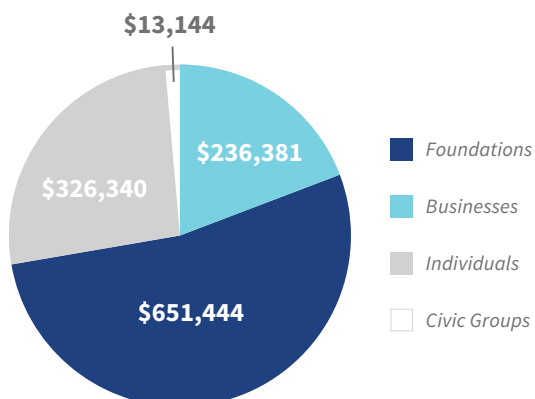
(contributions to OSSM)

Support of school programs	650,658		650,658
Total contribution to OSSM	650,658		650,658

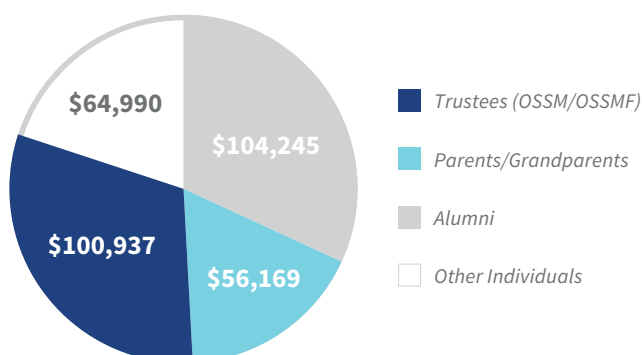
#### SUPPORTING SERVICES

Administration	103,232		103,232
Fundraising	51,293		51,293
Total supporting services	154,525		154,525
Total expenses	805,183		805,183
Transfer to Tulsa Community Foundation	(5,000)	5,000	
Increase (decrease) in net assets	(41,094)	(251,124)	(292,218)
Net assets at beginning of year	1,071,596	10,490,946	11,562,542
Net assets at end of year	1,030,502	10,239,822	11,270,324

## DONATIONS BY CONSTITUENCY



## INDIVIDUAL DONATIONS



## Many thanks for all our partners making gifts between June 1, 2018 to July 31, 2019!

### ARISTOTLE (\$100,000-\$499,999)

Inasmuch Foundation  
Sarkeys Foundation

### EUCLID (\$50,000-\$99,999)

Boeing Company  
Dr. Bryan Eastin  
OGE Energy Corporation

### LEONARDO DA VINCI (\$25,000-\$49,999)

Mr. and Mrs. Jerry R. Burger  
H. A. and Mary K. Chapman  
Charitable Trust  
Samuel Roberts Noble Foundation  
Simmons Charitable Foundation of Oklahoma  
Dr. Arne Troelstra

### COPERNICUS (\$15,000-\$24,999)

ConocoPhillips  
Kirkpatrick Foundation, Inc.  
Marathon Oil  
ONEOK Foundation, Inc.  
Presbyterian Health Foundation  
Mr. Allen Wise

### GALILEO (\$10,000-\$14,999)

The Anschutz Foundation  
Mr. James Hatcher  
E. L. and Thelma  
Gaylord Foundation  
Capt. Joy Lomheim ■  
Phillips 66 Company  
Stone Family Foundation  
Mr. and Mrs. Warren Thomas  
Worthen Industries LLC  
Mrs. Elizabeth Zoernig-Milam

### ISAAC NEWTON (\$5,000-\$9,999)

American Fidelity Foundation  
Anonymous ■  
Apple Inc.  
Mrs. Jan Barrick and Mr. Jerry Plant  
The Chickasaw Nation  
Mr. and Mrs. Jack Coffman  
Mr. Ken Fergeson  
German American  
Partnership Program  
Mr. Dan Little  
Jack Little Foundation  
Mr. and Mrs. David McLaughlin  
Paycom  
Rainbolt Family Foundation  
Drs. Rosemarie and John Thomas  
Tulsa Community Foundation  
Vanguard Charitable

### LOUIS PASTEUR (\$2,500-\$4,999)

Dr. and Mrs. John Armitage  
Mr. Tres Arvizo ■  
Mr. and Mrs. W. Lance Benham III  
Classen Medical Center PLLC  
Mrs. Josephine W. Freede  
Robert & MeiLi Hefner Foundation  
Hitachi Computer Products  
(America), Inc.  
J.P. Morgan Securities Charitable  
Giving Fund  
Mr. Nicholas Johnson ■  
Lester Family Foundation  
Dr. William R. Lovallo  
Northrop Grumman Foundation  
Oklahoma Natural Gas Company  
Oklahoma State University  
Foundation  
Mr. Brenton A. Phillips ■  
Ms. Suzy L. Strauss  
Mr. Bruzzy Westheimer  
Yukon Door & Plywood, Inc.

### MARIE & PIERRE CURIE (\$1,000-\$2,499)

AmazonSmile.org  
Baker Hughes—A GE Company  
Mr. and Mrs. Clayton I. Bennett  
Mr. and Mrs. Byron Berline  
Mr. and Mrs. Richard Bird  
Mr. and Mrs. G. T. Blankenship  
Dr. and Mrs. Jon Blaschke  
Drs. Danny and Susan  
Dusesnbery Bohl ■  
Harry and Louise Brown Foundation  
Mr. Steve Burrage CPA  
Mr. and Mrs. Joel E. Champlin  
Dr. and Mrs. H.K. Dai  
Ms. Teresa Dietrich and Mr.  
Jacob Rosenberg ■  
Ms. Marcy Fleming ■  
Mrs. Joan Frates  
Mr. and Mrs. Gary F. Fuller  
Greater Enid Chamber of Commerce  
Ms. Stella C. Han  
Dr. Cherie Herren ■  
Mr. Frank and Mrs. Bette Jo Hill  
Mr. and Mrs. Phillip Hoang  
INTEGRIS Cancer Institute  
Mr. and Mrs. Rex S. Ishikawa  
Fred Jones Family Foundation  
Mr. and Mrs. Don Kaspereit  
The Honorable Governor and Mrs.  
Frank Keating  
Kerr Foundation, Inc.  
Mr. and Mrs. David Knowles  
LafargeHolcim  
Capt. Charles D. Laubach ■  
Drs. Sharon and Kenneth Lease  
Mr. and Mrs. Jae Lee  
Mr. and Mrs. Jean C. Leger  
Mr. and Mrs. Surachart Limvaree  
Drs. Pedro Lozano and Isabel De Aos  
Mr. Paul Luber ■  
Mr. Zhong Luo and Dr. Ming Yu  
Dr. Edna McDuffie Manning  
McKinsey & Company  
Dr. and Mrs. Steven W. Meier ■  
Meinders Foundation  
Dr. and Mrs. Joseph F.  
Messenbaugh III  
Microsoft Matching Gifts Program  
Mr. Rance and Mrs. Robyn  
Grinstein Miller ■  
Dr. Dipti Nevrekar and Mr.  
Brad Bartley ■  
Mr. and Mrs. J. Larry Nichols  
Mrs. Linh Nguyen  
Nordstrom Charitable Giving  
Mrs. JoRel Sallaska Nye ■  
Oracle Corporation - Matching  
Gifts Program  
Mr. Sam Ott  
Dr. and Mrs. Stephen Prescott  
Mr. Kyle Pollard Pudenz ■  
Mr. Steven P. Rhines  
Mr. and Mrs. William W. Rodgers, Jr.  
Ms. Jeanne Sallaska  
Mr. Nathan Seidle ■  
Dr. Franki Lambert Smith ■  
Mr. and Mrs. Jimmie Smith  
Dr. Nataliya and Mr. Michael Smith  
Mrs. Mary Spencer  
Dr. Benjamin Stephens ■  
The Honorable and Mrs.  
Ralph Thompson  
Truist  
Mr. and Mrs. Paul Wehrenberg  
Martha Williams

Mr. Scott and Dr. Mina Wise ■  
Mr. and Mrs. Meijun Zhu

### JONAS SALK (\$500-\$999)

Accel Financial  
Dr. and Mrs. Robert E. Anderson  
Anonymous  
Anonymous  
ARL Bio Pharma, Inc.  
Mr. William Atkins ■  
Mr. Hyunju Ban and Mrs.  
Heegyung Ko  
Mr. and Mrs. Steven Brown  
Mr. Hoan Cao and Mrs. Lan Vu  
Ms. Lori Carroll  
Mr. Tyler Carter ■  
Mr. and Mrs. Daniel Clark  
Mr. and Mrs. William H. Crawford  
Capt. Sean T. Curtin ■  
Dr. Sangeetha Dayalan ■  
Niang Dim  
Dr. Adam Dixon ■  
Mr. Robert S. Doenges  
Dr. and Mrs. David L. Drennan  
Mr. and Mrs. Gregory Dunn  
Dr. and Mrs. Paul C. Ellgen  
Mr. and Mrs. Dale Embry  
Mr. and Mrs. James H. Everest  
Ms. Pam Felactu  
Mr. Lloyd T. Hardin Jr.  
Heritage Trust Company  
Mr. Jeff and Dr. Tanna  
Shaw Hoopingartner  
Mr. and Mrs. Reginald Johnson  
Mr. and Mrs. Asher Killian ■  
Dr. Paul Kincade  
Mr. Michael P. Kopelman  
The Honorable and Mrs.  
Tim Leonard  
Ms. and Mrs. Qiang Li  
Mr. and Mrs. David Liebl  
Mr. Chuan Lin and Mrs. Hong Fu  
Ms. Joy Lin ■  
Mr. and Mrs. Jason McCormick  
Mr. Mike McDonald  
Mr. and Mrs. Rocky Moore  
Mr. and Mrs. Ryan Mounts ■  
Dr. Janet Neufeld  
Mr. Brandon Nottingham ■  
Objectix, Inc.  
Osage Nation  
The Parasuram Foundation ■  
Mr. Jeffrey and Mrs. Jenny  
Birnbaum Peet ■  
Mr. Hal Pennington  
Pioneer Telephone Cooperative, Inc.  
Yuxin Qin  
Dr. and Mrs. John A. Robinson  
Dr. and Mrs. Adam Rush ■  
Mr. and Mrs. T.J. Ryan  
Mr. and Mrs. Michael Salamon  
The Honorable Gary and Mrs.  
Dayna Stanislawski  
Mr. and Mrs. Leonard E. Sullivan  
Mr. and Mrs. Sajjad Virani  
Dr. Ashley Friggel Walker ■  
Dr. Joyce C. Wang  
Mr. and Mrs. Richard Wells  
Mr. Matthew Wenger  
Mr. Kyle Wichert ■  
Wonderful Giving  
(formerly Rollgiving)  
Mr. and Mrs. Michael P. Wright  
**CHARLES DARWIN (\$250-\$499)**  
Ms. Cecilia Abrams  
Dr. Ann Ackerman

Mrs. Katie Altshuler  
Arnall Family Foundation  
Mr. Gerald Bednar III  
Boeing Company Gift  
Match Program  
Dr. Pat Capra  
Mr. and Mrs. Colin Chopin  
Mr. Thomas Deighan  
Major and Mrs. James T. Dunlap  
M.D. ■  
Mrs. Barbara Eskridge  
Mr. Mark and Dr. Pamela Fly  
Mr. and Mrs. John Francis  
Dr. and Mrs. Andrew Frost  
Ms. Yingjie Gao ■  
Captain and Mrs. Gerry Geletzke  
Ms. Charlotte W. Gibbens  
Drs. Latisha and Jonathan  
Heinlen ■  
Ms. Deborah Hicks  
Kimberly-Clark Corporation  
Mr. and Mrs. Philip Lance  
Dr. and Mrs. Frank H. Lawler  
Prudence Little Foundation  
Lyondell Chemical Company  
LTC and Mrs. Richard D. Lyons  
Mr. and Mrs. Ron Mashore  
Mr. and Mrs. James C. Meade  
Dr. Graham Mueller ■  
Oklahoma Medical  
Research Foundation  
OSSM Parents Association  
Mr. and Mrs. Frank J. Parker  
Ms. Dorothy Patrock  
Mr. and Mrs. Ryan Pivonka  
Mr. Ronald G. Reynolds  
Mr. Sunil Sahai ■  
Mr. Nimesh Shah ■  
Mr. and Mrs. Tony Shelby  
Mr. Geoffrey Simpson ■  
Dr. and Mrs. Gregory L. Skuta  
Dr. and Mrs. Davis Taggart  
Mr. and Mrs. John te Velde  
Mr. and Mrs. Errol Teel  
Ms. Adriana Tischler  
Mr. and Mrs. Robert Varnum  
Dr. Michael Wells  
The Honorable Susan Winchester  
Mr. and Mrs. Steven P. Wood  
Mr. Lee Young

### ALBERT EINSTEIN (--\$250)

Ms. Elsa M. Anderson-Cox  
Apache Foundation  
Mr. and Mrs. Dennis Atkins  
Ms. Ashley Bailey ■  
Mrs. Kristine Turvey Baranski ■  
Dr. Kent Buchanan  
Dr. and Mrs. Rico Buchli  
Mr. and Mrs. Robert M. Cheadle  
Mr. Otis Chodosh ■  
Mr. and Mrs. Allen Clark  
Mr. Josiah Couch ■  
Mr. and Mrs. Denis Curtin  
Mr. and Mrs. Quentin J. Danser  
Mr. James and Mrs. Linette  
Sherman Dawson ■  
Drs. Nancy L. and Richard B. Dawson  
Mr. Mark D. Doiron  
Dr. Kelley Dowd  
Mr. and Mrs. John Elliot  
Ms. Elizabeth Alspaugh Farabee  
Mr. John Finley  
Dr. Michelle Pinson Floyd ■  
Ms. Nancy Fogg  
Mr. and Mrs. Rufus B. Forbes, Jr.

Mr. and Mrs. Adam Gibson  
Google Matching Gifts Program  
Mr. and Mrs. David Grimmer  
Mr. and Mrs. Khon Ha  
Mr. and Mrs. Richard Haddad  
Mr. Mitchell Hallren  
Mr. and Mrs. Dale Hanchey  
Dr. and Mrs. Mason Henderson  
Mr. Jared Holeman  
Mrs. Jessica Simmons Hook ■  
Ms. Virginia Hoppe  
Dr. and Mrs. Dick Hsieh  
Intel Corporation  
Reverend and Mrs. Paul Jackson  
Mr. Craig Jimenez and Dr. Susan  
Spencer  
Dr. and Mrs. Michael Jordan  
Dr. Talia Karim ■  
Mrs. Robert S. Kerr, Jr.  
Mr. and Mrs. Lawrence R. King  
Mr. and Mrs. Alan Kirkpatrick  
Dr. and Mrs. Joseph A. Kopta  
Mrs. Suzanne Kreidler  
Ms. Hayley Lamberson ■  
Mr. Caleb Lareau ■  
Drs. Yolanda and Melchor Lim  
Ms. Carol Lin ■  
Dr. and Mrs. Victor Lindsey  
Dr. Lara Whittington Mashek ■  
Ms. Sylvia McFarland  
Ms. Jennifer Meason  
Mrs. Robyn Grinstein Miller ■  
Ms. Marisa Monroe ■  
Dr. Lila Nevrekar  
Ms. Bella Ngo ■  
Mr. Chris Nusbaum ■  
Ms. Jessica Oehrlein ■  
Mr. Thomas Peter & Mrs.  
Bindu Thomas  
Mr. and Mrs. Gaylon Pinc, P.E.  
Ms. Betty Replogle  
Mrs. Lesley Ford Richer ■  
Mrs. Sandra Stiles Roberts ■  
Mr. and Mrs. Ronald L. Scott  
Ms. Jeana Driver Starbuck ■  
Mr. Li C. Tien  
Mr. Max Tjauw ■  
Ms. Jodie Treeman ■  
Ms. Catherine Troelstra  
Mr. and Mrs. Dan Vossen  
Dr. Brandi A. Walker ■  
Dr. D. Gant Ward ■  
Dr. and Mrs. Jeff Waugh ■  
Dr. Ann Chou-Wendelboe &  
Dr. Aaron Wendelboe  
Mrs. Mary Howard Wikswo ■  
Dr. Joseph H. Williams  
Dr. Angel Wilson  
Mr. ZhaoYang Xu ■  
Ms. Fusun Yaman  
Dr. Kimberly Yang ■  
Mr. Cody Yocom  
Mrs. Ying Zhang

■ OSSM graduate

## MEMORIAL GIFTS

Mr. Francis Bartley  
*Given by Mr. Aaron Adler*  
*Given by Mr. Jacob Beal*  
*Given Ms. Susan Katz*  
*Given by Mr. Joseph Loyall*  
*Given by Ms. Fusun Yaman Sirin*  
Mrs. Nancy Berlin  
*Given by Mr. Frank Berlin*  
Mr. Jon Campbell  
*Given by Mr. Kyle Wichert \**  
Mr. Max Fuller \*  
*Given by Mr. Ronald Raynolds*  
Mrs. Prudence Little  
*Given by Mr. Jeffrey Levin*  
Mr. Robbie Mudroch \*  
*Given by Mr. Tyler Carter \**  
*Given by Mr. Jared Holeman*  
*Given by Ms. Jessie Oehrlein \**  
*Given by Mr. Mark Riechers*  
*Given by Mr. and Mrs. E. Glen Smith*  
Mrs. Linda Van Buskirk  
*Given by Mrs. Nancy Fogg*  
Senator Penny Williams  
*Given by Mr. and Mrs. Richard Haddad*  
*Given by Mr. and Mrs. Ross Swimmer*  
*Given by Dr. Doreen Wood*

## HONORARIA

Dr. Morgan K. Boes ■  
*Given by Mary Ann Boes*  
Ms. Joyce Jackson  
*Given by Dr. Doreen Wood*  
Mr. Dan Little  
*Given by Ms. Suzy Strauss*  
Dr. Frank Wang  
*Given by Mrs. Linh Nguyen*

## ALUMNI (BY CLASS)

### CLASS OF 1992

Mr. Brad Bartley  
Dr. Daniel Bohl  
Dr. Susan Dusenbery Bohl  
Dr. Dipti Nevrekar  
Mr. Nimesh Shah

### CLASS OF 1993

Mrs. Linette Sherman Dawson  
Mr. Geoffrey Simpson  
Mrs. Sandra Stiles Roberts

### CLASS OF 1994

Major James T. Dunlap M.D.  
Mr. Brenton A. Phillips  
Dr. D. Gant Ward

### CLASS OF 1995

Capt. Sean T. Curtin  
Ms. Teresa Dietrich  
Mrs. Lesley Ford Richer  
Mr. Paul Luber  
Dr. Lara Whittington Mashek  
Ms. Marisa McGregor Monroe  
Mr. Hemanth Parasuram  
Mrs. Jessica Hook  
Dr. Jeff Waugh  
**CLASS OF 1996**  
Mr. Tresí Arvizo  
Mrs. Robyn Grinstainer Miller  
Ms. Carol Lin  
Mr. Chris Nusbaum  
Mr. Kyle Pollard Pudenz  
Dr. Adam Rush  
Mr. Sunil Sahai  
Mrs. Kristine Turvey Baranski  
Dr. Brandi A. Walker

### CLASS OF 1997

Ms. Jeana Driver Starbuck  
Dr. Bryan Eastin  
Dr. Cherie Herren  
Dr. Talia Karim  
Ms. Joy Lin  
Mrs. JoRel Sallaska Nye  
Ms. Jodie Treeman  
Mr. Kyle Wichert

### CLASS OF 1998

Ms. Marcy Fleming  
Anonymous  
Dr. Steven W. Meier  
Mr. and Mrs. Ryan Mounts  
Mrs. Jenny Birnbaum Peet  
**CLASS OF 1999**  
Dr. Latisha Camp Heinlen  
Mr. Nicholas Johnson  
Mr. Asher Killian  
Dr. Franki Lambert Smith  
Capt. Charles D. Laubach

Dr. Graham Mueller  
Mr. Scott Wise  
**CLASS OF 2000**  
Dr. Sangeetha Dayalan  
Mr. Nathan Seidle  
Dr. Mina Copley Wise  
Dr. Kimberly Yang  
**CLASS OF 2001**  
Mr. William Atkins  
Dr. Ashley Friggel Walker  
Mrs. Mary Howard Wikswo  
Major Michelle L. Pinson Floyd, M.D.  
**CLASS OF 2002**  
Dr. Benjamin Stephens

### CLASS OF 2005

Dr. Adam Dixon

### CLASS OF 2006

Mr. Otis Chodosh  
Capt. Joy Lomheim  
**CLASS OF 2008**  
Ms. Hayley Lamberson

### CLASS OF 2009

Mr. Josiah Couch

### CLASS OF 2011

Mr. Caleb Lareau

### CLASS OF 2012

Mr. Tyler Carter  
Ms. Jessica Oehrlein  
**CLASS OF 2014**  
Ms. Ashley Bailey

### CLASS OF 2017

Ms. Yingjie Gao

### CLASS OF 2018

Ms. Bella Ngo  
Mr. Max Tjauw

## OSSM GIVING GROUPS

### AWESOME FRIENDS

Ms. Cecilia Abrams  
Mrs. Kathleen Abshire \*  
Mrs. Ann Simmons Alspaugh \*  
Mrs. Catherine Armitage  
Ms. Sue Ann Arnall  
Mrs. Nancy Arnold  
Mrs. Jane Austin  
Mrs. Maxine S. Austin \*  
Mrs. Pat Bailey  
Mrs. Antoinette M. Baker  
Mrs. Barbara A. Baker  
Ms. Jan Barrick  
Mrs. Gene Barth \*  
Mrs. Wanda Bass \*  
Dr. Mary Ann Bauman  
Mrs. Lu Beard  
Mrs. Julie Shdeed Beffort  
Mrs. DeDe Benham  
Mrs. Louise Gaylord Bennett  
Mrs. Carolyn Berry \*  
Mrs. Marilyn Bethea  
The Honorable Deborah Blackburn  
Mrs. Hilarie Blaney  
Mrs. Elizabeth Warren Blankenship  
Mrs. Lissa Blaschke  
Mrs. Shirley Blaschke  
Mrs. Lori Blumenthal  
Mrs. Ann Bohanon  
Mrs. Dolores Boyle \*  
Mrs. Nell Hathorn Bozalis \*  
Mrs. Sharon Bozalis  
Mrs. Patricia Brandt \*  
Mrs. Sharlene S. Branham  
Mrs. Sara Brown  
Mrs. Cheryl N. Browne  
Mrs. Carleen Burger  
Ms. Nancy Burger ■  
Ms. Bernice Butkin \*  
Mrs. Sara Jane Bynum \*  
Mrs. Jo Carol Cameron  
Dr. Patricia Capra  
Mrs. Beverly R. Carter  
Mrs. Nancy G. Cheek \*  
Mrs. Bess Clay \*  
Mrs. Helen Prentice Cleary \*  
Mrs. Mary Clements  
Mrs. Elizabeth Merrick Coe \*  
Mrs. Catherine Coffman  
Mrs. Kaye L. Cook  
Mrs. Barbara J. Cooper  
Mrs. Melinda Cox  
Ms. Betty Crow  
Mrs. Peggy Cummings \*  
Mrs. Suzanne Cunningham  
Mrs. Jean Dale \*  
Mrs. Anne J. Dalton

Mrs. Nancy J. Davies  
Mrs. Nancy de Cordova  
Mrs. Marion B. DeVore \*  
Dr. Dorothy V. Dodd  
Ms. Suzanne A. Donnolo  
Mrs. Anne Dougherty  
Ms. Carole J. Drake  
Dr. Gloria N. Dupree  
Ms. Teri Durr  
Ms. Evalie Edwards  
Mrs. Susan Edwards  
Mrs. Lyn Pryse Elam  
Mrs. Patti Jo Elder  
Mrs. Lida Elkins  
Mrs. Nancy P. Ellis  
Mrs. Barbara Eskridge  
Mrs. Christy Everest  
Ms. Tricia Everest  
Ms. Pam Felactu  
Mrs. Mary Holbrook Ferguson  
Mrs. Nancy Ford  
Mrs. Joan Frates  
Mrs. Mary Frates  
Mrs. Mex Frates \*  
Mrs. Josephine W. Freede  
Mrs. Connie Fuller  
Ms. Nedra R. Funk  
Mrs. Carol M. Gilliland \*  
Ms. Connie Givens  
Mrs. Laurie Givens  
Mrs. Vicki Gourley  
Ms. Betty D. Green  
Mrs. Virginia H. Greenberg  
Mrs. Nancy Greer  
Mrs. Kirsten Griffin  
Ms. Jean Gurnerson \*  
Mrs. Julia Carrington Hall  
Mrs. Karen Hall  
Mrs. Ann Halligan  
Mrs. Kirk Hammons  
Mrs. Ann Hargis  
Ms. Holly Healey  
Mrs. Angie R. Hester \*  
Mrs. Bette Jo Hill  
Mrs. Susan Samis Hoffman  
Mrs. Ciane Hogan  
Ms. Jill Hogan  
Ms. Lisa Hogan  
Mrs. Sarah Hogan  
Mrs. Shawn Hogan  
Mrs. Elaine B. Honnold \*  
Mrs. Ann Hoover \*  
Dr. Leslie Hudson  
Mrs. Sally Hughes  
Ms. Alice C. Hurst \*  
Mrs. Sue Ann Hyde  
Mrs. Betty Jackson \*  
Ms. Amanda C. Jones ■  
Ms. Marilyn Jones \*  
Mrs. Judy Jordan  
Mrs. Carol Kaspereit  
The Honorable Yvonne Kauger  
Mrs. Cathy Keating  
Mrs. M. Lynn Kelly  
Mrs. Lou C. Kerr  
Mrs. Jill Click King  
Mrs. Virginia Kite \*  
Mrs. Marilyn M. Law  
Mrs. Patti Leeman  
Mrs. Jenée Lister  
Mrs. Prudence Little \*  
Mrs. Judy Love  
Mrs. Karen Luke  
Dr. Laura L. Mackie  
Ms. Carol P. Magness  
Mrs. Joan S. Maguire  
Ms. Margaret C. Malloy  
Ms. Mary Anne Malone  
Dr. Edna McDuffie Manning  
Ms. Eleanor Maurer \*  
Mrs. Kathleen Byrns McClendon  
Mrs. D'Arline McCubbin  
Mr. Richard McCubbin \*  
Mrs. Brenda McDaniel  
Ms. Donna McKnight  
Mrs. Nadine McPherson  
Mrs. Stephanie Meara  
Mrs. Carolyn C. Mee  
Mrs. Margy S. Messenbaugh  
Mrs. Sandy Meyers  
Mrs. Donna Moler  
Mrs. Helen A. Moore \*  
Ms. Rita Moore

Mrs. Jeanne Mullins  
Mrs. Bonnie Naifeh  
Mrs. Jeanene Naifeh  
Mrs. Valerie Naifeh  
Dr. Donna J. Nelson  
Mrs. Mary Nichols \*  
Mrs. Polly Nichols  
Mrs. Susan Nickles \*  
Mrs. Donna Nigh  
Mrs. Madalynne Norick \*  
Mrs. Liz Onwuchuruba  
Mrs. Barbara Paul \*  
Mrs. Joan Payne  
Mrs. Lori Payne  
Mrs. Barbara Perry  
Mrs. Jeannine Rainbolt \*  
Mrs. Kim Rainbolt  
Mrs. Geraldine Raupe  
Mrs. Nancy Records  
Mrs. Berta Faye Rex \*  
Mrs. Melba Rhinehart  
Mrs. Jane Mullaly Rhodes  
Ms. Judy Richardson  
Mrs. Mozelle Richardson  
Ms. Susan Richardson  
Mrs. Barbara V. Robbins  
Ms. Pamela Robinson  
Mrs. Linda R. Rodgers  
Mrs. Marianne B. Rooney  
Mrs. Martha Parker Sadler \*  
Ms. Margaret S. Salyer  
Mrs. Karen Samis  
Mrs. Chelin Satherlie  
Mrs. Shirley Shanker  
Mrs. Pamela H. Shdeed  
The Honorable Bernice Sheddick  
Mrs. Mary Key Shipp  
Ms. Jeanne Hoffman Smith  
Mrs. Cornelia Sneed \*  
Mrs. Elena Snell  
Mrs. Sue Moss Sullivan  
Mrs. Wanda Swisher  
Mrs. Beth Tolbert  
Ms. Jo Curtis Towery  
Mrs. Carol Wilkinson Troy  
Mrs. Gladys H. Tucker \*  
Mrs. Betty Lou Upsher \*  
Mrs. Doretha Van Horn \*  
Mrs. Marilyn Warren Vandever  
Mrs. Sharon Varnum  
Mrs. Donna Kennedy Vogel  
Mrs. Anne Reniers Vose  
Mrs. Katherine W. Walker  
Mrs. Pat Becker Wallis  
Ms. Jean M. Warren  
Mrs. Karin Z. Warren \*  
Mrs. Ruth Bozalis Warren \*  
Mrs. Laura Warriner  
Mrs. Betsy White  
Mrs. Anna Noel Williams  
Mrs. Martha Williams \*  
The Honorable Penny Williams \*  
Mrs. Helen L. Wilson  
Ms. Mary Wilson  
Mrs. Rebecca Wilson  
Mrs. Donna K. Windel  
Mrs. Carolyn Wright \*  
Ms. Connie Zhai ■  
Mrs. Elizabeth Zoernig-Milam  
Mrs. Jill Zwahlen  
**AWESOME MEN**  
Dr. Michael Anderson  
Dr. John Armitage  
Mr. Keith E. Bailey  
Mr. W. Lance Benham III  
Mr. Clayton I. Bennett  
Mr. William M. Blaik \*  
Mr. G. T. Blankenship  
Dr. David R. Brown  
Mr. Jerry R. Burger  
Lt. John M. Burger, M.D. ■  
Mr. William Burger ■  
Mr. Joel E. Champlin  
Mr. Douglas R. Cummings \*  
Mr. Edwin de Cordova  
Mr. James H. Everest  
Mr. Lester Farmer \*  
Mr. Gary F. Fuller  
Mr. Kirkland Hall  
Dr. Don W. Haskins  
Mr. Frank D. Hill  
Mr. Dan Hogan III  
The Honorable Jerome A. Holmes

Mr. J. Clifford Hudson  
Mr. Craig Jimenez  
Mr. Mark Lester  
Mr. Dan Little  
Mr. Edmund O. Martin  
Mr. Bill Mathis  
Mr. Aubrey McClendon \*  
Mr. Robert J. McGrew ■  
Mr. David McLaughlin  
Mr. Frank A. McPherson  
Dr. Joseph F. Messenbaugh III  
Mr. Robert Naifeh \*  
Mr. J. Larry Nichols  
Mr. John W. Nichols \*  
The Honorable Ronald J. Norick  
Mr. Roy T. Oliver  
Mr. William C. Payne \*  
Mr. Brenton A. Phillips ■  
Mr. Ford Price \*  
Mr. H. E. Rainbolt  
Mr. George J. Records  
Dr. Galen P. Robbins \*  
Mr. Patrick T. Rooney  
Mr. Joseph F. Rumsey III \*  
Mr. Mike Samis  
Mr. Ben Shanker  
Mr. Lee Allan Smith  
Mr. James Vallion \*  
Dr. Frank Y.H. Wang  
Mr. E. Dean Werries \*  
Mr. Bruzzy Westheimer  
Mr. Allen Wise  
Mr. William R. Yinger, Sr.  
**AWESOME ALUMNI \$10K CLUB**  
Mr. Lawrence J. Brunzman  
Ms. Teresa Dietrich  
Capt. Joy Lomheim  
Mrs. Jenny Birnbaum Peet  
Mr. Brenton A. Phillips  
Mrs. Sandra Stiles Roberts  
Mr. Nathan Seidle  
**AWESOME LEGACY SOCIETY**  
**Giving 20+ Years**  
Elizabeth W. and G. T. Blankenship  
Nina and Robert Butkin  
Dr. Pat Capra  
H.A. and Mary K. Chapman Charitable Trust  
ConocoPhillips  
Dr. Ann and Brian Dell  
Dr. Dorothy Dodd and Suzanne Donnolo  
Robert Doenges  
Barbara Eskridge  
Christy and James Everest  
Ken Ferguson  
Joan Frates  
Connie and Gary Fuller  
Julie Hall  
Bette Jo and Frank Hill  
Hitachi Computer Products (America), Inc.  
Sarah and Dan Hogan  
Sue Ann and Dudley Hyde  
The Kerr Foundation  
Mrs. Sharon and Kenneth Lease  
Johanna and David Lee  
Dan Little  
Renee and Col. Richard Lyons  
Dr. Edna McDuffie Manning  
The Meinders Foundation  
Polly and Larry Nichols  
Samuel Roberts Noble Foundation  
OGE Energy Corp.  
OSSM Parents Association  
Presbyterian Health Foundation  
H. E. Rainbolt  
Dr. John A. Robinson  
Linda and Bill Rodgers  
Sarkeys Foundation  
George Singer  
Susan and Samuel Stone  
Jean M. Warren  
**Estate & Planned Gifts**  
Anonymous  
Catherine and Jack Coffman  
Linda Van Buskirk

\* Deceased

■ OSSM graduate

Every effort has been made to ensure that the list of donors is correct. If your name is misspelled or omitted, please accept our sincere apologies and inform our offices at (405) 522-7804. **Thank you!**



## OSSM FOUNDATION BOARD OF TRUSTEES

### EXECUTIVE COMMITTEE:

Sara Brown, Chair – Oklahoma City  
Jerry Burger, Secretary – Oklahoma City  
J. Mark Lester, Treasurer – Oklahoma City

Joel Champlin, Past Chair – Oklahoma City  
Lance Benham – Oklahoma City  
Lissa Blaschke – Oklahoma City  
Julie L. Hall – Oklahoma City

Lou Kerr – Oklahoma City  
Ryan Pivonka – Edmond  
Linda Rodgers – Oklahoma City

### TRUSTEES:

Ann Ackerman, Ph.D. – Oklahoma City  
Katie Altshuler – Oklahoma City  
Catherine Armitage – Oklahoma City  
Sue Ann Arnall – Oklahoma City  
Kristine Baranski (OSSM '96)  
Portland, OR/Yukon  
Jan Barrick – Oklahoma City  
Loyd L. Benson – Frederick  
Bart Binning, Ed.D. – Oklahoma City  
Daniel Brue, Ph.D. – Oklahoma City  
Rico Buchli, Ph.D. – Edmond  
Steve Burrage – Antlers  
William H. Crawford – Frederick  
Linette Dawson (OSSM '93) – Owasso  
Lisa Day – Oklahoma City

Teresa Dietrich (OSSM '95) – New York, NY  
Elizabeth Alspaugh Farabee – Oklahoma City  
Ken Fergeson – Altus  
Gary F. Fuller – Naples, FL  
Lloyd Hardin, Jr. – Oklahoma City  
D. Aaron Harmon – Enid  
Karlos K. Hill, Ph.D. – Norman  
Sarah Hogan – Oklahoma City  
Sue Ann Hyde – Oklahoma City  
Bradley W. Krieger – Oklahoma City  
Philip Lance – Edmond  
Jean C. Leger, Jr. – Oklahoma City  
Nancy Leonard – Oklahoma City  
Jennifer Meason – Walters  
Rob Miner – Oklahoma City

Sam Ott – Norman  
Hal Pennington, J.D. – Duncan  
Brenton Phillips (OSSM '94) – Plano, TX  
Russell Rother, Ph.D. – Oklahoma City  
Harry V. Rouse – Tulsa  
Meg Salyer – Oklahoma City  
Thomas Sell – Tulsa  
Eric Sherburn, M.D. – Tulsa  
Leonard Sullivan – Oklahoma City  
Warren Thomas – Purcell  
Ralph Thompson – Oklahoma City  
Michael Wells, Ph.D. – Oklahoma City  
Susan Winchester – Chickasha  
Steve Wood – Oklahoma City

### LIFETIME TRUSTEE:

Edna McDuffie Manning, Ed.D.  
OSSM (Founding) President Emerita  
Lexington

### ADVISORY TRUSTEES:

Bruzy Westheimer  
Ardmore

### EX-OFFICIO MEMBERS:

Dan Little, Esquire, Chairman, OSSM  
Madill  
Frank Y. H. Wang, Ph.D., President, OSSM  
Edmond

## OSSM GOVERNING BOARD OF TRUSTEES

Mr. Dan Little, Chair – Madill  
Dr. David Drennan, Vice Chair – Norman  
Dr. John Armitage – Oklahoma City  
Mr. Lance Benham – Oklahoma City  
Dr. Kent Buchanan – Edmond  
Mr. Jack Coffman – Oklahoma City

Dr. Tom Dieghan – Duncan  
Dr. Kelley Dowd – Oklahoma City  
Mr. Gary Ellis – Coweta  
Dr. Michael Jordan – Shawnee  
Dr. Paul Kincade – Oklahoma City  
Dr. Lara D. Mashek (OSSM '95) – Shawnee

Mr. Ron Mashore, P.E. – Choctaw  
Mr. Geoffrey Simpson (OSSM '93) – Tulsa  
Sen. Gary Stanislawski – Tulsa  
Ms. Donna Windel – Ardmore  
Mr. Cody Yocom – Oklahoma City

### EX-OFFICIO MEMBERS:

Dr. David Wrobel – Norman  
The Honorable Joy Hofmeister – Oklahoma City

Dr. Glen D. Johnson – Oklahoma City  
Dr. Glen Krutz – Stillwater

Mr. John Massey – Oklahoma City  
Dr. Kalpana Misra – Tulsa

Many thanks to Kimray, Inc. for their  
gracious partnership to produce this report!



(405) 522-7804

1141 N LINCOLN BLVD  
OKLAHOMA CITY, OK, 73104



OKLAHOMA SCHOOL of  
SCIENCE and MATHEMATICS  
FOUNDATION

[WWW.OSSMFOUNDATION.ORG](http://WWW.OSSMFOUNDATION.ORG)