



**THE OKLAHOMA SCHOOL OF
SCIENCE AND MATHEMATICS FOUNDATION
2013 ANNUAL REPORT**

The Oklahoma School of Science and Mathematics
is a state funded, tuition-free residential high school
for juniors and seniors with exceptional ability
and interest in mathematics and science.

In 1983 Oklahoma passed legislation creating OSSM and the first class graduated in 1992. In just 23 years OSSM's 1,346 graduates, hailing from all of Oklahoma's 77 counties, have received scholarship offers in excess of \$116 million. Fully 1 in 4 OSSM graduates is a National Merit Finalist, and 100% have pursued higher education. More than half of these bright students come from rural areas of Oklahoma, and many are the first in their families to attend college.

In addition to a wide variety of college-level course offerings in mathematics, chemistry, biology, physics, computer science and humanities, the curriculum includes robust programs in the arts and physical education. Many students participate in mentorships each year with professionals in their areas of scientific, technical, or professional interest, getting valuable hands-on career experience while still in high school.

More than 75% of OSSM faculty hold a doctorate degree in their area of instruction. World class instruction of advanced curriculum in an intensive residential setting where students live and study together, helping each other—all these things make it possible for these bright, hard working Oklahoma students to develop their math and science interests and skills to the furthest degree possible in high school and beyond.

Serving the entire State

OSSM operates a dozen Regional Centers around the state where rural high school students are offered advanced mathematics and science courses taught by OSSM professors at career-tech centers near their homes. This is an important step in educating all of Oklahoma's bright students.

LOCATIONS

Afton	Drumright	Poteau
Ardmore	Enid	Shawnee
Burns Flat	Muskogee	Tahlequah/Stilwell
Chickasha	Okmulgee	Wayne

In addition, OSSM is raising the bar of science and math education around the state with high quality outreach programs and activities for Oklahoma middle school students and teachers such as the OSSM Middle School Math Contest, summer math and science workshops, and high quality teacher training. OSSM has provided training to more than 12,000 of Oklahoma's mathematics and science teachers since 1990.

OSSM has become a model of educational excellence for Oklahoma.

OSSM Campus

In 2001 the OSSM Foundation completed a \$25 million Capital Campaign that built the Samson Science and Discovery Center, the first phase of the Dan Little Residence Hall, a gymnasium, the Senator Bernice Shedrick Library and renovated the Lincoln School Building.

The 60,000 sq. ft. first phase of the Dan Little Residence Hall was completed in 1998 ending seven years of students commuting from OU's Cross Center.

The Senator Bernice Shedrick Library opened in the fall of 2003. It is electronically equipped to handle the newest advancements in information technology and is able to house a 50,000-volume classical collection of books.

The Physical Education Center provides physical education facilities including a 500 seat gymnasium, regulation size basketball court, volley ball court, weight and exercise rooms, dressing rooms, and first aid and conference rooms.

The 22,000 sq. ft. Samson Science and Discovery Center is equipped with state of the art facilities, including six research and seven teaching laboratories, a Visiting Scholar Lab, an electron microscope room, photography dark room, and offices.

An additional \$8 million campaign was completed in 2013 to finish the second phase of the Dan Little Residence Hall. Completion of the new twin dormitory wings in 2014 doubled the school's residential capacity to 288 students.



“Awesome” Alumni



LCDR MICA “TAZ” FOSTER, OSSM CLASS OF 1997

Mica earned her BA in Physics from Smith College and graduated US Navy Officer Candidate School before serving on the USS AUSTIN as a Surface Warfare Officer and Officer of the Deck and the USS HARRY S TRUMAN as a Nuclear Engineer operating reactor plants and specializing in chemistry and radiological controls. Since earning Naval Aviator designation in SH-60H and HH-60H helicopters, she has served on the USS NIMITZ and is presently deployed on the USS CARL VINSON. Her Strike Group regularly operates in the Indian Ocean and Persian Gulf flying combat missions into Afghanistan. As a helicopter pilot onboard, Mica’s primary missions are search and rescue, anti-surface and anti-submarine warfare, and vertical replenishment/logistics. She intends to retire from active service in seven years and return to Oklahoma to help out on her family’s farm, fly medevac helicopters with local EMS, and teach flying to the next generation!

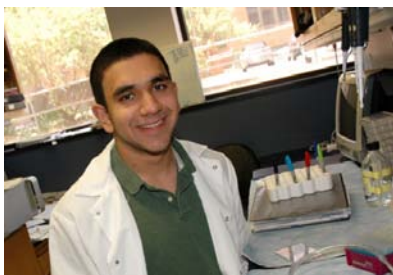


FRANCESCA WINTER, OSSM CLASS OF 1994

Attended Oklahoma State University where she received a BS in Electrical Engineering and went on to complete her MBA from Oklahoma Christian University. She was a Peace Corps Volunteer from 1999-2001 in Namibia, teaching English as a second language (ESL), math and physical science to junior high and high school students and traveling throughout Southern Africa. Francesca is currently a Compression Operations Engineer at OG&E-Enogex, a natural gas pipeline company in Oklahoma City.

*“OSSM created an opened a multitude of new doors for me. When I joined the Peace Corps I left behind my family, friends and the comforts of my life to pursue an unknown adventure. I knew I could do it—I already had at OSSM”
—Francesca Winter*

2013 Rhodes Scholar



MUBEEN SHAKIR, OSSM CLASS OF 2010

and a senior at the University of Oklahoma where he majors in biochemistry was selected as a 2013 Rhodes Scholar. Dedicated to a career in medicine, particularly oncology, Mubeen has done research at the OU Health Sciences Center Departments of Pediatrics and Urology, the Oklahoma Medical Research Foundation in the Free Radical Biology Program as a Presidential Scholar, and Columbia University Medical Center. He also worked at the Center for Creation of Economic Wealth at the University of Oklahoma to develop an iPad application and commercialization strategy for use as a concussion detection tool for high school football. Mubeen also co-founded an education program for underprivileged youth in Oklahoma, tutors children and teens in the Oklahoma Muslim community, and is an opinion columnist for the student newspaper. Mubeen will pursue a M.Sc. by research in oncology at Oxford.

“OSSM has been the best academic decision I have made. I would not be here without it and the faculty who make it great.” —Mubeen Shakir

“OSSM helped me to realize my potential and provided me with the confidence to achieve more than I could have imagined.”

~James Dunlap, MD, Surgeon, OSSM Class of 1994

“At OSSM, I learned leadership and responsibility. Gaining knowledge went from a task that ought to be done to a joy that shapes who I am and who I may become.”

~Rev. Sara Dillard Bodenstein, Pastor and OSSM Professor, OSSM Class of 1994

- The 1,346 students now graduated from OSSM have received scholarship offers in excess of \$115 million.
- *85% of OSSM alumni are remaining in technical/scientific fields for their career pursuits.*
- Of the 700-800 graduates who have completed their educations and who are now working;
 - More than 300 are practicing engineers
 - More than 100 have earned MD degrees
 - Ten have earned DO degrees
 - Five have earned PharmD degrees
 - 60 have earned PhD degrees
 - Two have earned DVM degrees
 - Two have earned DDS degrees
 - 30 have earned JD degrees
 - One Rhodes Scholar
- More than 75 are currently serving or have served in the United States Armed Forces.
- Approximately 60% of OSSM graduates (1992-2013) reside in Oklahoma. Though many OSSM alumni are still completing their education, more than half of those already employed are working in Oklahoma.



The OSSM Foundation . . .

is fostering excellence in K-12 science and mathematics education throughout Oklahoma by supporting the Oklahoma School of Science and Mathematics' outreach projects, programs, development, students, staff, and faculty.

Some of the OSSM programs made possible by contributors to the OSSM Foundation include:

Critical Faculty Positions

Loss of 28% in appropriations and nearly a third of our faculty over the past five years has made it extremely challenging to provide the quality education that has come to be expected of one of the finest high schools in the nation. OSSM offers a dozen college-level math classes beyond those found in the traditional high school model, taught by a largely Ph.D. faculty, with similarly advanced offerings in biology, chemistry, physics, and computer science. Generous private partnership and the willingness of OSSM faculty to take on additional responsibilities in tough economic times is making it possible for OSSM to nourish the highest achievement in math and science of Oklahoma youth, regardless of family resources, for generations to come.

Critical faculty positions were generously sponsored in 2013 by:

- **Devon Energy Corporation**
- **OGE Energy Corporation**
- **The Jerome M. Westheimer Family Foundation**



OSSM students are proud to visit with Mr. Larry Nichols (center) of Devon Energy at the Oklahoma Health Center Foundation Chamber Breakfast in Spring 2013

Faculty Endowment

OSSM's distinction as one of the top high schools in the nation, public or private, is a result of deliberate and continued investment in exceptional faculty. However, retaining a first-rate teaching staff without being competitive in compensation is almost impossible.

In 2000, the OSSM Foundation Faculty Endowment was established and invested to achieve long-term stability and to insure that the OSSM Foundation will be able to help school officials maintain, for years to come, the exceptional caliber of faculty the school has employed since the Inaugural Faculty set the highest possible standards in the early 1990's.

More than 70% of our professors hold doctorates in the disciplines they teach. They provide advanced instruction and tutor and mentor students individually outside of regular classes, giving extra time, knowledge, wisdom, and support to make sure every OSSM student succeeds. For them, teaching at OSSM is not a job; it is a way of life. It is imperative to the continued success of the OSSM program that we keep these remarkable men and women on staff.

..... Raised \$5.8 million
..... Goal \$6.6 million

Faculty Awards Program

To make strong strides toward reaching the Faculty Endowment goal, farsighted benefactors established an endowed Faculty Awards Program. Faculty Award gifts of \$150,000 or more to the Faculty Endowment will provide a permanent source of income for annual faculty stipends while also establishing a permanent award on the OSSM campus honoring an outstanding faculty member. Since the Endowed Faculty Award was established in the year 2000, nine awards have been presented:

- *The Edith Kinney Gaylord Faculty Award* honoring Dr. Dorothy Dodd, Professor of American Literature and Coordinator of Fine Arts
- *The McCasland Foundation Faculty Award* honoring Dr. Xifan Liu, Professor of Physics
- *The Awesome Friends Faculty Award* honoring Dr. Ann Dell, Professor of Biochemistry, Genetics, and Molecular and Cell Biology
- *The Ann Simmons Alspaugh Faculty Award* honoring Professor Chengde Feng, Professor of Mathematics
- *The Awesome Men's Faculty Award* honoring Dr. Fazlur Rahman, Professor of Chemistry
- *The Edna McDuffie Manning Faculty Award* honoring Professor Yunhua Feng, Professor of Mathematics
- *The OSSM Foundation Faculty Award* honoring Dr. Mark Li, Professor of Biology
- *The Devon Energy Faculty Award* honoring Dr. Kurt T. Bachmann, Professor of Physics
- *The OGE Energy Faculty Award* honoring Mr. Charles Dillard, Professor of Computer Science

Alumni/alumnae giving is critical to the continued success of OSSM! As giving to the Faculty Endowment by each class reaches \$150,000, a Faculty Award will be established honoring an outstanding OSSM professor. As of Fall 2013,

Class of 1992	\$ 10,053	Class of 2000	\$ 40,642	Class of 2008	\$ 18,945
Class of 1993	\$107,240	Class of 2001	\$ 21,409	Class of 2009	\$ 14,200
Class of 1994	\$ 43,262	Class of 2002	\$ 14,582	Class of 2010	\$ 27,294
Class of 1995	\$ 31,924	Class of 2003	\$ 11,897	Class of 2011	\$ 15,400
Class of 1996	\$ 19,718	Class of 2004	\$ 5,058	Class of 2012	\$ 18,096
Class of 1997	\$ 10,205	Class of 2005	\$ 49,052	Class of 2013	\$ 23,250
Class of 1998	\$ 17,327	Class of 2006	\$ 22,184	Class of 2014	\$ 8,715
Class of 1999	\$ 17,408	Class of 2007	\$ 15,827		

Many thanks for especially generous gifts to their Class Faculty Awards in 2013 from:

- **Dr. Bryan Eastin (Class of 1997)**
- **Mr. Nathan Seidle (Class of 2000)**

Bridge Fund

Bridge Fund gifts are used in the short term to supplement faculty salaries until the goal for the Endowment is reached.

Major support in 2013 came from:

- **Inasmuch Foundation**
- **Aubrey McClendon**
- **Kirkpatrick Foundation**
- **Samuel Roberts Noble Foundation**

Fine Arts Program

Fine Arts have been an integral part of the curriculum since OSSM's opening. The administration and faculty are committed to the ideal of preparing our students, not only as professionals in their chosen fields but also as leaders in the community who appreciate and support the arts. OSSM Fine Arts classes are taught by local professional artists who instruct students in drawing, mixed media, ballroom dance, ballet and modern dance, yoga and tai chi, photography, choir, and orchestra.

2013 Fine Arts sponsors included:

- **Oklahoma City Community Foundation**
- **Fred Jones Family Foundation**



Mixed Media instructor Diana Tunnell is much appreciated by Tiffany Mehagan (Seminole, Strother HS) and Kenny Asojo (Norman, Norman North HS) of the Class of 2013

Investigative Research Scholars Program (IRSP)

With generous leadership of OSSM Foundation Trustee Lou Kerr and The Kerr Foundation, the Investigative Research Scholars Program (IRSP) began in September of 2003. IRSP is an intensive three-week summer research experience following their junior year where students work daily with professional mentors executing hands-on research projects, attending guest lectures, and participating in discussions of ethical and cultural issues in their chosen fields of study. Students frequently continue to work with their mentors through their senior year.

The IRSP program has been generously endowed to date by:

- **The Kerr Foundation**
- **Mrs. Ann Simmons Alspaugh**
- **The Clark and Wanda Bass Family Foundation**
- **The Essel Foundation**
- **Mr. and Mrs. Rodman Frates**
- **Kerr-McGee Corporation**
- **Presbyterian Health Foundation**
- **Dr. William Talley & Mrs. Britani Bowman**
- **Mr. Bruzzy Westheimer**

In June 2013, nine OSSM students engaged in projects in physiology, cell biology, cardiovascular disease, autoimmune disease, genetics, retinal degeneration, ophthalmic infection, radiation oncology and pharmacy.

Summer Math & Science Teacher Institutes

Middle school math and science teachers from across Oklahoma who attend these one-week intensive residential OSSM summer workshops benefit from academic education, enrichment and hands on laboratory opportunities. Attendees also receive supplies and books to take back to their local classrooms.

Sponsored in 2013 by:

- **The Sarkeys Foundation**
- **ConocoPhillips & Phillips 66**

Middle School Summer Math & Science Workshops

Free OSSM Summer One-Day Math Workshops offer middle school students an excellent foundation to master state standards, strengthening skills in general math, pre-algebra, Algebra I, geometry, and Algebra II, as well as contest math. Four math workshops were offered at OSSM in 2013 with three others offered in rural areas around the state, serving 230 students (up 43%!) from 72 schools in 29 counties.

The first of two Science Day summer workshops at OSSM introduced students to forensic investigation, various types of engineering, chemistry/ biochemistry, nano-technology and entrepreneurship. The second workshop included a half-day Noble Academy plant science class plus presentations on FIRST Robotics, Prosthetics, Computer Science, Video Gaming, and Petroleum Engineering and a demonstration on Autonomously Flying Quadcopters. Twenty presenters over the two days introduced 133 excited students (238% increase!) from 79 schools in 33 counties to a wide variety of exciting possible STEM futures. Altogether, we served 363 students in 2013, up 60% from 2012!

The 2013 Summer Workshop program was generously sponsored by:

- **Williams Companies**

Westheimer Leadership Awards

A generous contribution in late 2013 established the Westheimer Leadership Awards to recognize students monthly for outstanding leadership and positive contributions to dorm life. Many thanks to:

- **Mr. Bruzzy Westheimer**

Student Life Enrichment Programs & Activities

- **Women's Business Leadership Conference** - In March, all young women students of OSSM attended the 22nd Annual Women's Business Leadership Conference in Tulsa as guests of **Mrs. Lou Kerr**, hearing about career experiences, strategies, and lessons learned from a number of successful businesswomen.
- **Executive Management Briefings**
The **Parents Association of OSSM** contributed tickets and transportation to send all OSSM students to the OSU Spears College of Business Executive Management Briefing in 2013.

- **Etiquette Dinner**
- The **Parents Association of OSSM** also sponsored all students to receive training in business and international etiquette from Ms. Hilarie Blaney in spring of 2013 and practice their new knowledge in a formal Etiquette Dinner.
- **All School Thunder Game** – A generous anonymous donor made it possible for the entire student body to attend an exciting Thunder game in the Spring, a much anticipated and much needed respite from academic pressures.
- **OSSM Senior Swim Party**
As has become a much-honored tradition over many years, **Mrs. Ann Alspaugh** graciously hosted the OSSM Class of 2013 for a special picnic and Senior Swim Party at her beautiful home in May before graduation.
- A variety of additional extra-curricular activities for students were made possible by endowment proceeds from donors to the **Oklahoma City Community Foundation**



OSSM President Dr. Frank Wang thanks Mrs. Ann Alspaugh for graciously hosting OSSM students

Student Exchange Program

The **Robert and MeiLi Hefner Foundation** very graciously sponsors the annual Hefner Initiative student exchange program to encourage better understanding and relationships between the United States and China. The Hefners sponsored four students from Beijing High School #4 in China to visit OSSM for three weeks in January/February 2013 and sponsored two OSSM students, Austin Fehr and Andrew Chang, and two students from the Webb School in California to visit Beijing and Singapore for 10 days during July. The life changing experience broadened OSSM awardees' view of the world and gave them valuable insights to take with them into the future while giving our new Chinese friends an experience of Oklahoma's commitment to the highest levels of math and science education.

Other programs made possible by generous 2013 contributions included:

General Operations - Part-time PE Teacher

- Dr. and Mrs. Emmanuel Barias
- Mr. and Mrs. Craig Hasty
- Oklahoma Heart Hospital
- Presbyterian Health Foundation

General Operations – Economic Impact Study

- Groendyke Transport, Inc.

General Operations – Other

- Mr. and Mrs. Jerry Burger
- Ms. Teresa Dietrich
- Dr. Bryan Eastin
- Jean I. Everest Foundation
- Herman Kaiser Foundation
- Mr. Dan Little
- Mr. Nathan Seidle
- Stone Family Foundation
- Mr. and Mrs. Hyun Taek Suh

Scholarships

- Mr. Joel Welnitz

Special Student Needs

- The Kerr Foundation

Equipment Needs—Spectrometer

- Dr. Amal Chakraborty
- Mr. Adam Dixon
- Mr. David Dixon
- Mrs. Suzanne Kreidler
- Dr. Steven Meier
- Dr. Faridali Ramji
- Professional Corporation of Psychiatry, Inc.



OSSM Chairman Dan Little enjoys helping Emily Bird (Edmond, Edmond North HS) and Garrett Coats (Muskogee, Hilldale HS) practice their formal dining P's & Q's at the 2013 Etiquette Dinner

THE OKLAHOMA SCHOOL OF SCIENCE AND MATHEMATICS FOUNDATION
STATEMENT OF ACTIVITIES – YEAR ENDING DECEMBER 31, 2013

	Unrestricted	Temporarily Restricted	Permanently Restricted	Total
Revenue, gains and other support:				
Contributions				
Unrestricted	\$181,037			\$181,037
Restricted for specific purpose		\$1,105,677		\$1,105,677
Restricted for permanent endowment			\$94,436	\$94,436
Interest Income (net of fees of \$27,711)	\$29,591	\$102,774		\$132,365
Net unrealized and realized gains on investments	\$34,938	\$512,619	\$41,902	\$589,459
Total revenue, gains, and other support	<u>\$245,566</u>	<u>\$1,721,070</u>	<u>\$136,338</u>	<u>\$2,102,974</u>
Net assets released from restrictions	\$1,038,253	-\$1,038,253		
Total revenue, gains, and other support	\$1,283,819	\$682,817	\$136,338	\$2,102,974
Expenses:				
Program contributions to OSSM				
Support of school programs	\$464,182			\$464,182
Equipment usage contribution	\$52,519			\$52,519
Building construction	\$575,230			\$575,230
Total contribution to OSSM	<u>\$1,091,931</u>			<u>\$1,091,931</u>
Supporting services				
Professional services	\$69,975			\$69,975
Fundraising	\$9,407			\$9,407
Legal, accounting and audit	\$23,266			\$23,266
Printing, postage and office supplies	\$3,713			\$3,713
Other expenses	\$44,001			\$44,001
Total supporting services	<u>\$150,362</u>			<u>\$150,362</u>
Total expenses	<u>\$1,242,293</u>			<u>\$1,242,293</u>
Increase (decrease) in net assets	\$41,526	\$682,817	\$136,338	\$860,681
Net assets at beginning of year	<u>\$1,161,733</u>	<u>\$2,693,612</u>	<u>\$4,726,252</u>	<u>\$8,581,597</u>
Net assets as end of year	<u>\$1,203,259</u>	<u>\$3,376,429</u>	<u>\$4,862,590</u>	<u>\$9,442,278</u>

(audited)

Many thanks to all of you whose generous gifts in 2013 to the Oklahoma School of Science and Mathematics Foundation helped more students from all over Oklahoma develop their math and science skills and passions to the greatest degree possible. Your investment in them will benefit all of us for many years to come. Thank you!

Corporations

A-Jeweler American Southwest Inc.
Artisan Partners Limited Partnership
Boeing Company Gift Match Program
ConocoPhillips
Dental Clinic—Drs. Mark and Carolyn Keyes
Devon Energy Corporation
Fleshman Agency Inc.
Google Matching Gifts Program
Great Plains Coca-Cola Bottling Company
Groendyke Transport Inc.
Hitachi Computer Products (America) Inc.
Kimberly-Clark Corporation
LMI Aerospace Inc.
Microsoft Matching Gifts Program
National Cowboy & Western Heritage Museum
OGE Energy Corporation
Oklahoma Heart Hospital LLC
Oklahoma Natural Gas Company
Phillips 66 Company
Pioneer Telephone Cooperative Inc.
Professional Corporation of Psychiatry Inc.
Quail Creek Bank
Rollgiving
Target Stores
Texas Roadhouse Holdings LLC
Tulsa Community Foundation
Ward Petroleum Corporation
Wells Fargo Foundation Educational Matching Gift Program
Whitney Do Inc.
Winchester Group LTD
Yukon Door and Plywood Inc.

Foundations

Judith and Jean Pape Adams Charitable Foundation
Apache Foundation
Baker Hughes Foundation
H. A. and Mary K. Chapman Charitable Trust
Coca-Cola Foundation
Camille and Henry Dreyfus Foundation Inc.
Jean I. Everest Foundation
Robert & MeiLi Hefner Foundation
Inasmuch Foundation
Fred Jones Family Foundation
Herman Kaiser Foundation
Kerr Foundation
Kimberly-Clark Foundation
Kirkpatrick Foundation Inc.
Lester Family Foundation
National Christian Foundation
NFG Foundation Inc
Samuel Roberts Noble Foundation
Northrop Grumman Foundation
Oklahoma City Community Foundation
ONEOK Foundation Inc.
Pimco Foundation
Presbyterian Health Foundation
Sarkeys Foundation
Charles and Lynn Schusterman Family Fnd
Simmons Foundation
Stone Family Foundation
Vose Foundation Inc.
Jerome M. Westheimer Family Foundation

Organizations

Exchange Student Program
National Society of High School Scholars Foundation
OSSM Parents Association

Stanley's Graduate Services
Twentieth Century Club
West Oklahoma City Rotary Club

Awesome Friends

Ms. Ann Simmons Alspaugh
Dr. Mary Ann Bauman
Mrs. Elizabeth Warren Blankenship
Mrs. Carleen Burger
Mrs. Jo Carol Cameron
Mrs. Mary Clements
Ms. Betty Crow
Mrs. Peggy Cummings
Mrs. Suzanne Cunningham
Mrs. Nancy de Cordova
Ms. Suzanne A. Donnolo
Mrs. Barbara Eskridge
Mrs. Connie Fuller
Mrs. Julie L. Hall
Mrs. Bette Jo Hill
Mrs. Sarah Hogan
Mrs. Sue Ann Hyde
Ms. Amanda C. Jones
The Honorable Yvonne Kauger
Mrs. Karen Luke
Ms. Mary Anne Malone
Dr. Edna McDuffie Manning
Mrs. Kathleen Byrns McClendon
Mrs. Stephanie Meara
Mrs. Liz Onwuchuruba
Mrs. Barbara Paul
Mrs. Jeannine Rainbolt
Mrs. Jane Mullaly Rhodes
Mrs. Marianne B. Rooney
Ms. Margaret S. Salyer
Ms. Jean M. Warren

Awesome Men

Mr. W. Lance Benham III
Mr. G. T. Blankenship
Mr. Jerry R. Burger
Mr. Douglas R. Cummings
Mr. Edwin de Cordova
Mr. Gary F. Fuller
Mr. Kirkland Hall
Mr. Frank D. Hill
Mr. Dan Hogan
Mr. Dan Little
Mr. Bill Mathis
Mr. Aubrey K. McClendon
Mr. H. E. Rainbolt
Mr. Patrick T. Rooney
Mr. James Vallion
Mr. Bruzzy Westheimer

Individuals

Ms. Cecilia Abrams
Mr. and Mrs. Harry C. Abrams
Mrs. Lucille F. Ackerman
Ms. Nita Kaye Adams
Mr. and Mrs. Michael Akers
Mr. Matthew Allen
Mr. and Mrs. J. Lynton Allred
Ms. Ann Simmons Alspaugh
Dr. and Mrs. John Armitage
Ms. Stella Arvizo
Mr. Tresi Arvizo
Mr. and Mrs. Olumide Asojo
Drs. Estella A. and Eliot A. Atekwana
Mr. and Mrs. Dennis Atkins
Mr. William Atkins

Dr. Kurt T. Bachmann
Mr. and Mrs. Bernie M. Baldwin
Ms. Susan K. Bales
Mr. Jeremy D. Ball
Dr. Michelle L. Pinson Bandino
Dr. and Mrs. Emmanuel Barias
Dr. Mary Ann Bauman and Mr. Barton Dawson
Mr. William Bell
Mr. and Mrs. Jerry Bendorf
Mr. and Mrs. W. Lance Benham III
Mr. Frank Berlin
Mr. and Mrs. Byron Berline
Mrs. Catherine Bird
Mr. and Mrs. G. T. Blankenship
Ms. Mary Ann Boes
Dr. and Mrs. L. Joe Bradley
Mr. and Mrs. Matthew Bray
Mr. Nicholles Brooke
Mr. Glen Brown
Ms. Hester Brown
Mr. and Mrs. Steven Brown
Mr. Lawrence J. Brunsman
Dr. Rico Buchli
Mr. and Mrs. Jerry R. Burger
Lt. John M. Burger M.D.
Ms. Jean C. Burke
Mr. J. Bradford Burkman
Mr. Steve Burrage CPA
Ms. Laura Calvery
Mrs. C. B. Cameron
Mr. Benjamin Cassidy
Dr. Brandt Cassidy
Mr. and Mrs. Martin M. Cassidy
Dr. and Mrs. Amal Chakraborty
Mr. and Mrs. Bill Chambers
Mr. and Mrs. Robert M. Cheadle
Mr. and Mrs. Jin-Song Chen
Dr. and Mrs. James Chodos
Mr. and Mrs. Colin Chopin
Mr. and Mrs. Richard H. Clements
Mr. Mason Cole
Mr. and Mrs. Luther F. Cowan
Dr. Michael K. Crawford
Mr. and Mrs. William H. Crawford
Ms. Betty Crow
Mr. and Mrs. Douglas R. Cummings
Mr. and Mrs. Stanley L. Cunningham
Mr. and Mrs. Denis Curtin
Lt. Cmdr. Sean T. Curtin
Mr. and Mrs. Kaushik Daji
Ms. Kim Dang
Dr. S. Bret Danilowicz
Mr. and Mrs. Quentin J. Danser
Drs. Nancy L. and Richard B. Dawson
Dr. Ralph W. Day
Dr. Sangeetha Dayalan
Mrs. Edwin de Cordova
Mr. and Mrs. Charles R. Dees
Mr. and Mrs. Gary Dick
Ms. Teresa D. Dietrich
Mr. and Mrs. Wei-Qun Ding
Mr. Adam Dixon
Mr. and Mrs. David Dixon
Mr. Robert S. Doenges
Mr. Mark D. Doiron
Ms. Suzanne A. Donnolo
Dr. and Mrs. John Drake
Dr. and Mrs. David L. Drennan
Mrs. Cynthia Shdeed Dugger
Major and Mrs. James T. Dunlap M.D.
Mr. and Mrs. Charles F. Dusenbery

Dr. Bryan Eastin
Mr. and Mrs. Leonard J. Eaton Jr.
Mr. Michael Elledge
Mr. and Mrs. Dale Embry
Dr. Kumar Ennamuri and Mrs. Sridevi Nagumalli
Mr. and Mrs. John W. Erickson
Mr. and Mrs. Mahlon Erickson
Mrs. Barbara Eskridge
Ms. Pam Felactu
Professors Yunhua and Chengde Feng
Mr. Ken Fergeson
Ms. Barbara M. Flett
Mr. Mark and Dr. Pamela Fly
Dr. Robert Ford
Ms. Patsy Ruth Fowler
Mr. and Mrs. G. D. Fox
Mr. Joseph France
Mr. and Mrs. Gary F. Fuller
Ms. Ann T. Garrett
Captain and Mrs. Gerry Geletzke
Ms. Joan Gilmore
Mr. and Mrs. Marlin I. Glass Jr.
Mr. and Mrs. John P. Gleason
Mr. and Mrs. Mark Goodwin
Ms. Anne Kraft Gray
Mr. and Mrs. David Grimmer
Mr. and Mrs. Jack Grisham
Mr. and Mrs. Kirkland Hall
The Honorable and Mrs. James E. Halligan
Dr. Robert Hamm and Ms. Ingrid Young
Mr. Lloyd T. Hardin Jr.
Mr. and Mrs. Stan Harrison
Mr. and Mrs. Craig Hasty
Mr. James Hatcher
Mr. Sean Heaton
Mr. and Mrs. Ty Hebert Sr.
Brig. Gen. (Ret.) Richard R. Hefton
Dr. and Mrs. Mason Henderson
Dr. E. Scott Henley
The Honorable Robert H. Henry
Ms. Deborah Hicks
Mr. and Mrs. Frank D. Hill
Mr. and Mrs. Peter Hoang
Mr. and Mrs. Gregory Hodgen
Mr. and Mrs. Dan Hogan III
Mrs. Anne S. Holbrook
Ms. JoAnn H. Holden
The Honorable Jerome A. Holmes
Ms. Virginia Hoppe
Mrs. Carolyn Howell
Ms. Sarah Howell
Dr. and Mrs. Dick Hsieh
Dr. Edward J. Huycke
Mr. and Mrs. Hung Van Huynh
Dr. and Mrs. Stephen S. Hwang
Mr. and Mrs. Dudley Hyde Esquire
Dr. and Mrs. Yongwoo Inn
Mr. and Mrs. Rex S. Ishikawa
Mr. Mike and Mrs. Cindi Fleshman Jackman
Reverend and Mrs. Paul Jackson
Mr. and Mrs. Fred Janisch
Ms. Debra Jefferson
Dr. and Mrs. Andrew Jeng
Mr. Craig Jimenez and Dr. Susan Spencer
Ms. Amanda C. Jones
Mr. and Mrs. Donald Jorski
Ms. Talia Karim
Ms. M. Carol Eadie Kaspereit
The Honorable Yvonne Kauger
Mr. and Mrs. Travis Kieu
Mr. and Mrs. Roger Kirchhoff
Mr. and Mrs. Craig R. Knutson
Ms. Sally B. Koch
Mrs. Suzanne Kreidler
Mr. and Mrs. Owen Lafferty
Capt. Charles D. Laubach

Mr. and Mrs. Frank H. Lawler
Ms. Alberta Lawley
Drs. Sharon and Kenneth Lease
Mr. and Mrs. Milt W. Lehr
The Honorable and Mrs. Tim Leonard
Mr. and Mrs. Jeffrey Levin
Mr. Dan Little
Dr. and Mrs. Xifan Liu
Mr. and Mrs. Michael J. Loomis
Mr. and Mrs. John Lovitt
Mr. and Mrs. Robert P. Luke
Mr. Zhong Luo and Dr. Ming Yu
Mr. and Mrs. Bobby Lyon
LTC and Mrs. Richard D. Lyons
Dr. and Mrs. George Malatinszky
Ms. Mary Anne Malone
Ms. Alyssa Manning
Dr. Edna McDuffie Manning
Mr. and Mrs. William Marseilles
Mr. and Mrs. Robert A. Marshall
Mrs. Sally Marx
Mr. and Mrs. Bill Mathis
Mr. and Mrs. Kurt Maxwell
Mr. Douglas Mayfield
Dr. and Mrs. Richard McClain
Mr. and Mrs. Aubrey K. McClendon
Mr. and Mrs. James McDaniel
Mr. Mike McDonald
Mr. and Mrs. Clifton McElyea
Mr. Robert J. McGrew
Mr. and Mrs. Bill McMartin
Mr. and Mrs. James C. Meade
Mr. and Mrs. David Meara
Dr. and Mrs. Steven W. Meier
Ms. Alva Melot
Mr. and Mrs. Carroll Miller
Ms. Sarah Miracle
Ms. Kellie H. Mitchell
Dr. and Mrs. Ram S. Mohan
Mr. and Mrs. John Moore Jr.
Mr. and Mrs. Preston Moore
Mrs. Alma More
Mr. and Mrs. Joseph Morris
Mr. Robert Morrison
Mr. and Mrs. Wayne Morton
Mr. and Mrs. Sohrab Nael
Ms. Sharon F. Neuwald
Dr. Lila Nevrekar
Dr. and Mrs. Scott Newbrough
Mr. and Mrs. Melvin Newman
Mrs. JoRel Sallaska Nye
Mr. and Mrs. Levi Onwuchuruba
Mr. and Mrs. Jose A. Osornio
Mr. Sam Ott
Mr. and Mrs. David L. Pagels
Dr. Adit Panchal
Mr. and Mrs. Frank J. Parker
Mr. and Mrs. William G. Paul
Mr. Jeffrey and Mrs. Jenny Birnbaum Peet
Mr. and Mrs. Phiet The Pham
Mr. Brenton A. Phillips
Mr. and Mrs. Lee Pickens
Mr. and Mrs. W. DeVier Pierson
Mr. Gaylon Pinc P.E.
Dr. and Mrs. J.F.M. Post
Ms. Gail Quinlan
Dr. and Mrs. A. K. Fazlur Rahman
Mr. H. E. Rainbolt
Dr. and Mrs. Faridali Ramji
Mr. Ronald G. Raynolds
Mr. and Mrs. Nissim D. Revah
Mr. Steven P. Rhines
Mrs. Jane Mullaaly Rhodes
Mrs. Lesley Ford Richer
Dr. John A. Robinson
Mr. and Mrs. Chris Rollins
Mr. and Mrs. Patrick T. Rooney

Mr. and Mrs. William J. Ross
Dr. and Mrs. Jayanta K. Rudra
Mr. Sunil Sahai
Mr. and Mrs. Gary Salwierak
Ms. Margaret S. Salyer
Ms. Virginia S. Savage
Mr. Nathan Seidle
Mr. Nimesh Shah
Dr. Amathul Azeem Shakir
Dr. Faiz Shakir
Mr. Melvin Shebester
Dr. and Mrs. Christopher Shrock
Mr. and Mrs. Herbert Shrock Jr.
Mr. Richard L. Sias
Mr. George Singer
Dr. and Mrs. Leonard N. Slater
Mr. and Mrs. Jimmie Smith
Mr. and Mrs. Marvin Smith
Dr. and Mrs. William A. Smith
Mrs. Ralph G. Spencer
Mr. and Mrs. Will R. Spurgeon
Mrs. Catherine Jackson Steffen
Mrs. Linda Steinhorn
Mr. Ming-Shan Su and Mrs. An-Chen Lai
Mr. and Mrs. Hyun Taek Suh
Mr. and Mrs. Leonard E. Sullivan
Dr. and Mrs. Jinghui Sun
Mr. James Tanner
Mr. and Mrs. Rick L. Taylor
Mr. and Mrs. Errol Teel
Drs. Darren and Yvan Thomas
Mr. Matthew E. Thrasher
Mr. Li C. Tien
Ms. Sherri Toland
Mr. Eric A. Tong
Mr. Anh Tran
Mr. John A. Trigg
Mr. and Mrs. Greg A. Trujillo
Mr. and Mrs. E. J. Tucker
Dr. Ginger Walden Turner
Mr. and Mrs. Don Turvey
Mr. and Mrs. Mukul Tyagi
Mr. and Mrs. Michael Underwood
Mr. James Vallion
Drs. Ravi Kumar and Padmaja Vasireddy
Mr. and Mrs. F. "Pat" Ver Steeg
Mr. and Mrs. Dan Vossen
Mr. and Mrs. Gerald Wade
Mr. and Mrs. James Wakefield
Mr. and Mrs. Shawn Wakefield
Dr. and Mrs. Frank Y.H. Wang
Dr. Joyce C. Wang
Dr. and Mrs. Zengyu Wang
Ms. Betty Ward
Dr. and Mrs. D. Gant Ward
Ms. Jean M. Warren
Dr. Jeff Waugh
Mr. and Mrs. Kenneth W. Waugh
Mr. Joel Wellnitz
Dr. and Mrs. Jim H. Wells
Mr. Bruzzy Westheimer
Ms. Susan Winchester
Mr. and Mrs. Steven P. Wood
Mr. and Mrs. Dick Workman
Mr. Todd York
Mr. and Mrs. Chang Youn
Dr. and Mrs. Joe Zhao
Mr. Michael Zink

In Memory of

Dan Bird

Given by Mrs. Cathy Bird

Goldie Bugher

Given by Ms. Kellie Hiatt Mitchell

Dr. Kathleen Cassidy

Given by Dr. Brandt Cassidy

Tom Clingenpeel
Given by Dr. Edna McDuffie Manning
Kathy Fleming
Given by Dr. Edna McDuffie Manning
J. Leland Gourley
Given by Dr. and Mrs. L. Joe Bradley
Philip H. Hoedebeck, Sr.
Given by Dr. Edna McDuffie Manning
Connie Mack McCoy
Given by Dr. Edna McDuffie Manning
Renee Neuwald
Given by Ms. Sharon Neuwald
Dr. Ramona Paul
Given by Dr. Edna McDuffie Manning
Elizabeth Payne
Given by Ms. Patsy Fowler
Jim Purdy
Given by Dr. Edna McDuffie Manning
Bill Turpen
Given by Dr. Edna McDuffie Manning
William Waugh
Given by Mr. and Mrs. Herbert Shrock

In Honor of

J. J. Allred
Given by Mr. and Mrs. J. Lynton AllredAnn
Alspaugh
Given by Ms. Joan Gilmore
Given by Mrs. Sally Marx
Given by Mr. James Vallion
Max Angst
Given by Mr. James Tanner
Dr. Kurt Bachmann
Given by Dr. Edna McDuffie Manning

Professor Monique Baxter
Given by Dr. Kumar Ennamuri
Sena Brothers
Given by Dr. Edna McDuffie Manning
Debbie Cook
Given by Dr. Edna McDuffie Manning
Dr. Ann Dell
Given by Dr. Edna McDuffie Manning
Professor Charles Dillard
Given by Dr. Edna McDuffie Manning
Dr. Dorothy Dodd
Given by Dr. Edna McDuffie Manning
Given by Ms. Sarah Miracle
Suzanne Donnolo
Given by Dr. Edna McDuffie Manning
Pam Felactu
Given by Dr. Edna McDuffie Manning
Nicole Flett
Given by Ms. Barbara Flett
Keith Forshee
Given by Dr. Edna McDuffie Manning
Professor Jack Gleason
Given by Mr. William Atkins
Given by Dr. Edna McDuffie Manning
Given by Ms. Sarah Miracle
J. P. Grego
Given by Mr. and Mrs. E. J. Tucker
Dr. Shayne Johnston
Given by Dr. Kumar Ennamuri
Dr. Kenneth Lease
Given by Dr. Edna McDuffie Manning
Johanna Lee
Given by Dr. Edna McDuffie Manning
Dr. Xifan Liu
Given by Dr. Edna McDuffie Manning

Dr. Edna McDuffie Manning
Given by Kimberly-Clark Corporation
Given by Mr. and Mrs. Dudley Hyde
Lucas Miller
Given by Mr. and Mrs. Colin Chopin
Lynn Morgan
Given by Dr. Edna McDuffie Manning
Dr. Jan Post
Given by Dr. Edna McDuffie Manning
Dr. Fazlur Rahman
Given by Dr. Kumar Ennamuri
Given by Dr. Edna McDuffie Manning
Avi Revah
Given by Mr. and Mrs. Nissim Revah
Gary Salwierak
Given by Dr. Edna McDuffie Manning
Dr. Farideh Samadzadeh
Given by Dr. Edna McDuffie Manning
Al Shelton
Given by Dr. Edna McDuffie Manning
Paul Smith
Given by Mr. and Mrs. Jimmie Smith
Coach Dan Vossen
Given by Dr. Kumar Ennamuri
Nate Wakefield
Given by Mr. and Mrs. James Wakefield
Dr. Frank Y. H. Wang
Given by Mr. Frank Berlin
Given by Mr. Nicholles Brooke
Given by Suzanne Donnolo
Given by Dr. Kumar Ennamuri
Given by Mr. Li C. Tien
Given by Dr. Joyce Wang
Professor Peggy Wolf
Given by Dr. Edna McDuffie Manning

OSSM Foundation Board of Trustees

Executive Committee

Julie Hall, Oklahoma City, *Chairman*
Lance Benham, Oklahoma City, *Vice Chair*
Gary F. Fuller, Oklahoma City, *Secretary*
J. Mark Lester, Edmond, *Treasurer*
Jerry Burger, Oklahoma City, *Past Chair*
Ken Ferguson, Altus
Sarah Hogan, Oklahoma City
Lou Kerr, Oklahoma City
Bruzzy Westheimer, Ardmore

Trustees

William M. Bell, Oklahoma City
Loyd L. Benson, Frederick
Sara Brown, Oklahoma City
Rico Buchli, Edmond
Steve Burrage, Antlers
Joel Champlin, Enid
William H. Crawford, Frederick
Douglas R. Cummings, Oklahoma City
Robert S. Doenges, Tulsa
Linda S. Frazier, Tulsa
Lloyd Hardin, Jr., Oklahoma City
E. Scott Henley, Ph.D., Edmond
Greg Hodgen, Enid
Sue Ann Hyde, Oklahoma City
Craig Jimenez, Edmond
Nancy Leonard, Oklahoma City
Robert Luke, Oklahoma City

Max Myers, Edmond
Sam Ott, Norman
Barbara Paul, Oklahoma City
Linda Rodgers, Oklahoma City
Marianne Rooney, Oklahoma City
Lil Ross, Oklahoma City
Meg Salyer, Oklahoma City
George Singer, Tulsa
Susan C. Stone, Tulsa
Leonard Sullivan, Oklahoma City
Ralph Thompson, Oklahoma City
James Vallion, Oklahoma City
George Wilson, Norman
Susan Winchester, Chickasha
Steve Wood, Oklahoma City
Todd York, Norman

National Advisory Board

Carl Djerassi, Ph.D. – Stanford, CA
James R. Gavin III, M.D., Ph.D. – Chevy Chase, MA
General Thomas P. Stafford – Alexandria, VA
Lyle C. Wilcox, Ph.D. – South Charleston, WV
L. Duane Wilson – Houston, TX

Ex-Officio Members

Dan Little – Madill
Chairman, OSSM Board of Trustees
Frank Y.H. Wang, Ph.D. – Oklahoma City
President, OSSM

OSSM Board of Trustees

Mr. Dan Little, Madill, *Founding Chairman*
Dr. David Drennan, Norman, *Vice Chairman*
Dr. Mary Ann Bauman, Edmond
Dr. Kent Buchanan, Edmond
Mr. Jack Coffman, Oklahoma City
Mr. Mason Cole, Sulphur
Mrs. Talita DeNegri, Norman
The Honorable Jim Halligan, Oklahoma City
Mr. Carl D. Johnson, Jones
Dr. Michael Jordan, Shawnee
Dr. Lara D. Mashek, Shawnee
Mr. Ron Mashore, Choctaw
Mr. Steven Rhines, Ardmore
Mr. Geoffrey Simpson, Tulsa
Ms. Donna K. Windel, Ardmore

Ex-Officio Members

The Honorable Janet Barresi, Oklahoma City
Dr. Kelly Dampousse, Norman
Dr. Bret S. Danilowicz, Stillwater
Mr. Jimmy Harrel, Elk City
Glen D. Johnson, Oklahoma City
Dr. Kalpana Misra, Tulsa